

재정포럼

Monthly Public Finance Forum

가

가

공민서원

• 2003년 7월 15일 발행 • 제85호 • 1999년 5월 31일 등록 • 라7889 • 발행처: 한국조세연구원 • 138-774 서울특별시 송파구 가락동 79-6 • 전화 (02) 2196-2130 ~ 2 • 월간

2003년 7월호 (동권 제85호)

한국조세연구원

C . O . N . T . E . N . T . S

2	/
6	/
16	가 /
34	/
48	
60	2003 5
64	가
66	
67	5
68	2003 7 1 가가
73	
97	追更 ...

/ KDI

가 4



가

가 20

4

가

가

가
가

가 ,
가 가

가

가

가

5

(GPRA : Government Performance and Results Act)

가

가
가

가

3

5

가

가
가 가

가

가

가

가가
가가

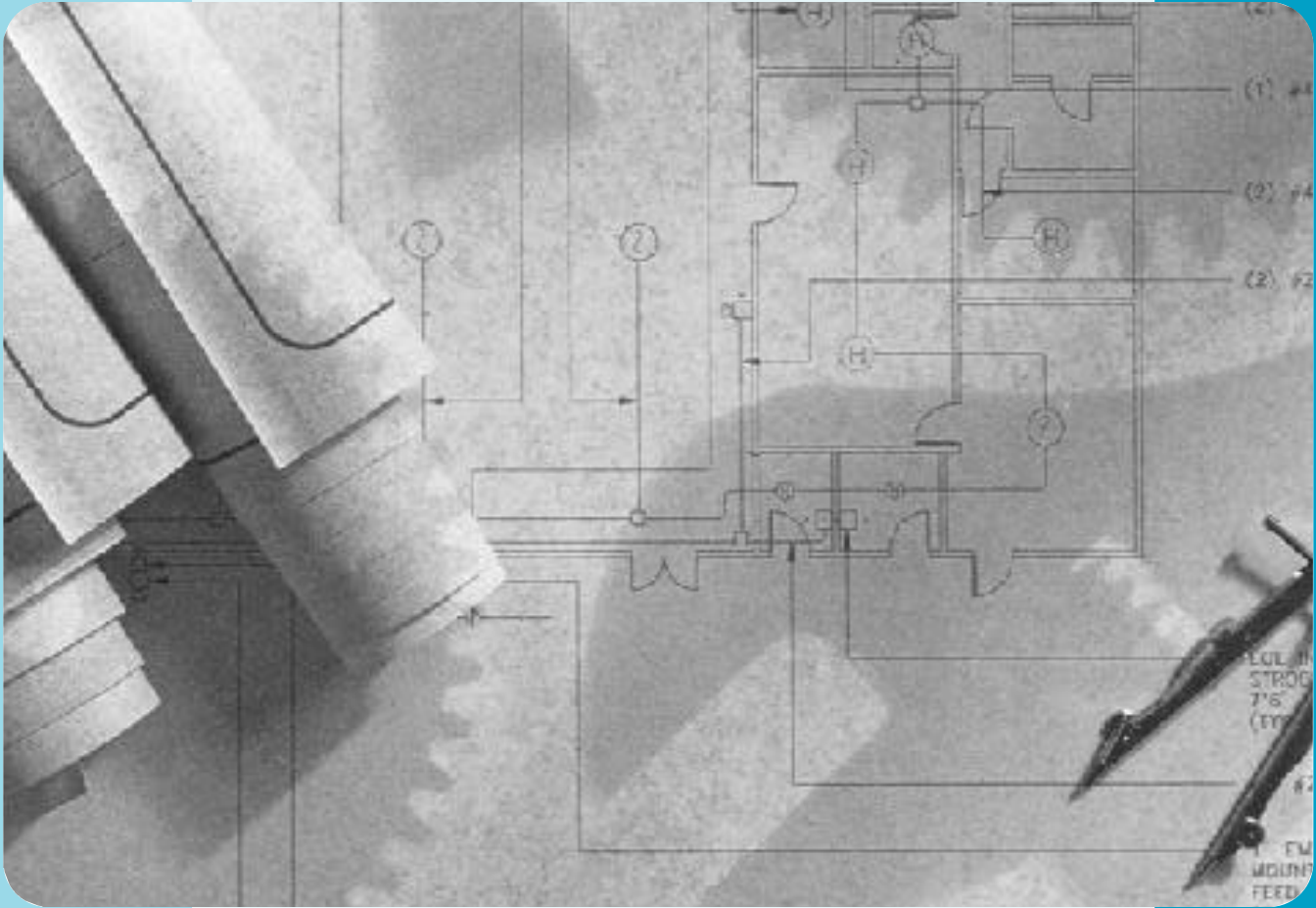
가 가

가

가

가

다





(1)



(tjun@kipf.re.kr)

.

.

. , 가

.

가

.

,

가 가

가

가가

.

,

,

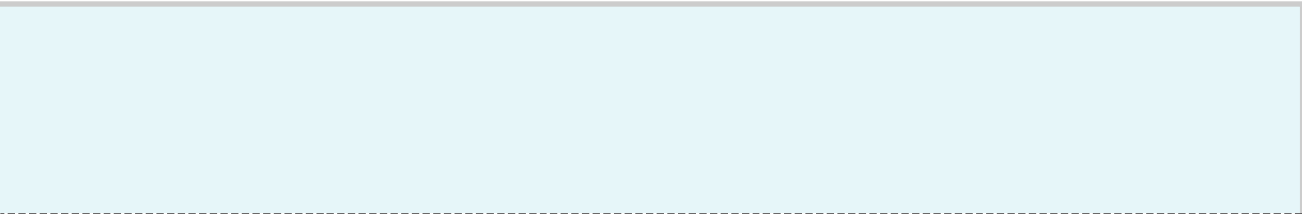
.

,

.

.

*



가 가

가

가

가

가 가

가

Milgrom and Roberts(1992)

가

가

가

(1)

가
 Marschak and Radner(1972) 가
 1). 가
 가
 Downs(1967)
 1.
 n+1 .0
 0
 , '0' '1' 가 가 ,0
 ;1 '
 0 가 , 1
 가1 가
 1
 . k가 1 a_k 가
 가 : $a_1 < a_2 < \dots < a_n$ a_k k가

1)

: Zandt(1990), Radner(1993), Li(1999).

가

가 가
가 .

2.

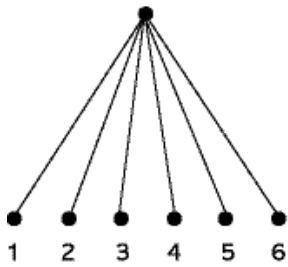
n=6 . [1(a)]

가 . $\frac{1}{6}(a_1 + a_2 + \dots + a_6)$
[1(b)]

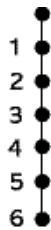
가 . 가 ,
 $1 - \hat{a}_1 \hat{a}_2 \hat{a}_3 \hat{a}_4 \hat{a}_5 \hat{a}_6, (\hat{a}_k \equiv 1 - a_k)$
[1(c)] . 1 3

4 . 2 5 6
 $1 - \frac{1}{4}(\hat{a}_1(\hat{a}_3 + \hat{a}_4) + \hat{a}_2(\hat{a}_5 + \hat{a}_6))$

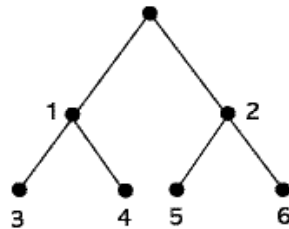
[1] 6



(a)



(b)



(c)

가

$$a_1 + a_2(1 - a_1)(1 - q) \leq a_2 + a_1(1 - a_2)(1 - q)$$

가

가

가

2:

가

i 가

j

i j

2

가

2

가

가

가

, [2]

$n=3$

q

가

1, 2, 3

3

2

, q

2 3

1

가

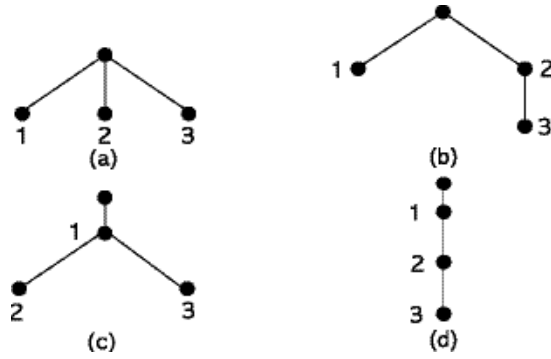
가

, q

가

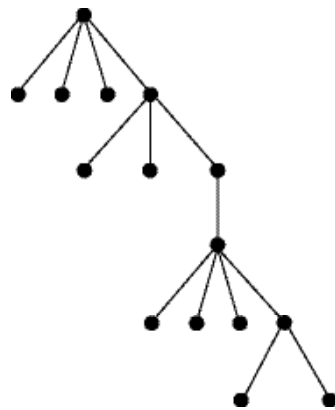
(1)

[2]



m 가 m 가

[3]



가 ,

Downs A., Inside Bureaucracy, Boston, Little, Brown and Company 1967.

Li, H., " Hierarchies and Information-Processing Organization, Review of Economic Design, Vol .4., pp. 101 ~ 126, 1999.

Marsčak, J. and R. Radner, Economic Theory of Teams, Yale University Press, 1972.

Milgrom P. and J. Roberts, Economics, Organization and Management, Prentice Hall, Englewood, New Jersey, 1992.

Radner J. " The Organization of Decentralized Information Processing, Econometrica, pp. 1109 ~ 1146, 1993.

van Zandt, Efficient Parallel Addition, Bell Laboratories Discussion Paper, 1990.

가

- 가



(byungi@kipf.re.kr)

1988 10

가

1999

5

1)

가 (2002),).

5

가

,

가

가

가

가

*
1)

가

가 가 - 가 가

가 ^{2)가} 가 ³⁾ 가 가 가 가

- 가

가 가

OECD

가 가 가 가

2) 가가
3) 5 가 5

2/3 가 가

(2)

가

가

가 가

2001 381
570 66.8%

가

(1998)

79.7% 20.3%

가

< 1> 가

(2001)

(: ,%)

(A)	가 (B)	(A/B)
3,808,476	5,704,389	66.8

: ,^ㅍ 2002.

,^ㅍ2001 2002.

가

33.2%

가

가

가

가

가

2001

가

96.0
(1998)

가

160.6

59.8%

20.3%

가 가

< 2> 가

(2001)

(:)

가	가	가
1,605.6	960.4	1,289.8

가

가

가 가

9%⁴⁾ 40 가 60%

$$(W) = 0.15(A+B)(1+0.05n)$$

, A (): 가 3
 B (): 가 가
 n (가): 20 가 (가 - 20)

(129) , 40 가 5) 가 60%, 77.4
 6) 1.67 가 40
 < 3> , , (2004 가)

	가 ()	가 (960,400)	가 (1,289,800)	가 (1,608,600)
(%)	20	43.7	30.0	27.1
	30	65.6	45.0	40.6
	40	87.5	60.0	54.1
()	20	337.5	387.0	434.3
	30	506.3	580.4	651.5
	40	675.1	773.9	868.6
()	20	1.79	1.53	1.38
	30	1.74	1.49	1.34
	40	1.96	1.67	1.51

: 1. 2004 가 가18 가 .
 2. 가 2001 가 .

4) 가 7% 2005 7 9%
 5) 가 가 7~3%(2004~2060, 가 3~2%(2004~2060, 18 .
 6) 가 가 가 .

(2)

가 (161) 54.1%, 86.9 , 1.51
 가 (96)
 87.5%, 1.96
 4 가
 2 7)
 , ,
 - , ,
 , 가
 , 가
 가 가 가
 (160.8) 45.1%, 0.93
 가 (96.0)
 58.6%, 1.21 21%

< 4> 2 , ,

	가 ()	가 (960,400)	가 (1,289,800)	가 (1,608,600)
(%)	20	29.3	25.0	22.5
	30	43.9	37.5	33.8
	40	58.6	50.0	45.1
()	20	281.3	322.5	361.9
	30	421.9	483.7	542.9
	40	562.6	421.9	723.9
()	20	1.28	1.09	0.98
	30	1.13	0.97	0.87
	40	1.21	1.03	0.93

: 2004 가

7) 50% 9% 2010~2014 10.37%, 2015~2019 11.74%,
 2020~2024 13.11%, 2025~2029 14.48%, 2030 15.85% 2070
 2

가

가

가

(1998) 20.3%
 < 5> 8). 2004 가 40 가 가
 (96.0) 1.96 1.44 (가
) 0.52 가 0.46~
 0.52 가 가
 2 가
 가
 . 2004 가
 40 가 가 1.21 1.07 0.14
 가
 가
 가

< 5> 가 ()

가	20	30	40
	1.79	1.74	1.96
	1.32	1.28	1.44
+	0.47	0.46	0.52

8) 가 (1998) 20.3% 10%, 30%

(2)

< 6> 가 (2)

\가	20	30	40
	1.28	1.13	1.21
+	1.13	1.00	1.07
	0.15	0.13	0.14

1.

가 가

. OECD 가 9), , ,
, , 가
가

. OECD 가 , , ,

OECD 가 가 , , , , 가
, , , 가

9)

OECD 가 가 가

< 7> OECD 가

		0			
		0	0		
		0	0	0	,
	0 ^a	0 ^a			
		0	0		
		0	0		
		0			,
가		0			,
		0	0		
	0	0			
	0 ^a	0 ^a			,
		0			
	0	0			,
	0 ^a	0 ^a			,
		0			,
	0	0			,
		0			,
		0	0		
	0 ^a	0 ^a	0		,
		0	0		
	0	0	0		
		0	0		,

1. : ,

2. : ,

3. : 가 ,

4. : (Residency)

a:

: Social Security Programs Throughout the World: Europe 2002SSA.

Social Security Programs Throughout the World: Asia and the Pacific 2002SSA(Social Security Association).

OECD 가

가 (

)

가

2.

:

가

가

가

가

가

가

가

가

3

(A)

가

,

(A)

가

가

3

가

가

3

가

가

가

가

. 2004

가 40

가

가

(

161

)

60%,

96.3

,

1.67

54.1%,

86.9

,

1.51

가 (< 8>).

가

가

가

가

가

,가

< 9>

< 8> < 3>

0.15 ~ 0.28

가 가

가

, 가

가

가

.40 가

가 가

(96)

60%,

57.6 ,

1.67

87.5%,

67.5 ,

1.96

(< 10>).

가

가

< 11>

< 10> < 3>

가

가

0.15 ~ 0.29

< 8>

가

()

	가 ()	가 (96)	가 (129)	가 (161)
(%)	20	40.1	33.7	30.0
	30	60.1	50.5	45.0
	40	80.2	67.3	60.0
()	20	384.9	434.3	481.7
	30	577.3	651.5	722.5
	40	769.8	868.6	963.4
()	20	2.04	1.72	1.53
	30	1.99	1.67	1.49
	40	2.24	1.88	1.67

(2)

< 9> 가

	가	가 (96)	가 (129)	가 (161)
()	20	0.25	0.19	0.15
	30	0.25	0.18	0.15
	40	0.28	0.21	0.16

< 10> 가 , , ()

	가 ()	가 (960,400)	가 (1,289,800)	가 (1,605,600)
(%)	20	30.0	26.2	24.0
	30	45.0	39.3	36.0
	40	60.0	52.3	47.9
()	20	288.1	377.5	384.9
	30	432.2	506.3	577.3
	40	576.2	675.1	769.8
()	20	1.53	1.33	1.22
	30	1.49	1.30	1.19
	40	1.67	1.49	1.34

< 11> 가

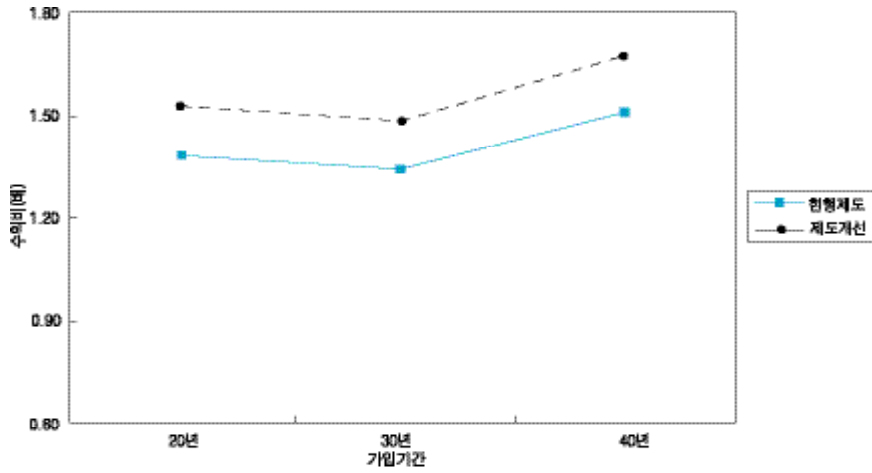
	가	가 (96)	가 (129)	가 (161)
()	20	- 0.26	- 0.20	- 0.16
	30	- 0.25	- 0.19	- 0.15
	40	- 0.29	- 0.18	- 0.17

가

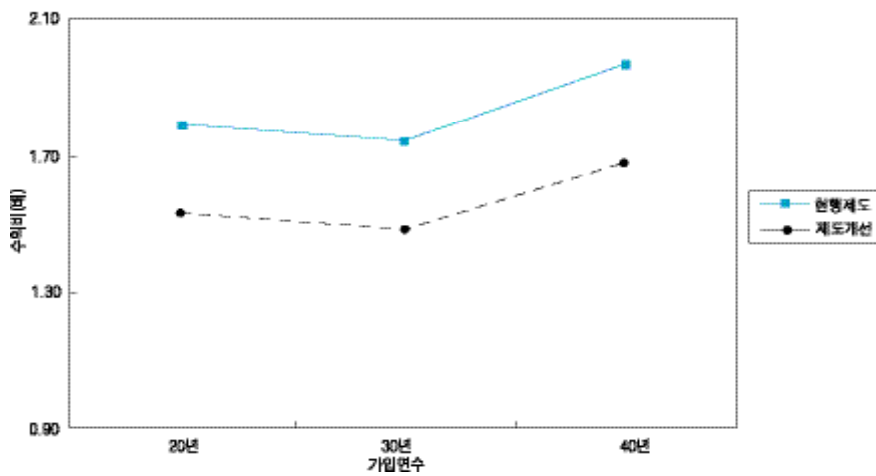
가 가 가
0.15~0.28 가 , 가
가

0.15~0.29 .

[1] 가



[2] 가



(2)

가 가 가 가 가 가
 (E_W) 가 가 (E_L)

$$E_W = \frac{0.15(A_W + B)(1 + 0.05n)}{0.15(A + B)(1 + 0.05n)} > 1$$

$$E_L = \frac{0.15(A_L + B)(1 + 0.05n)}{0.15(A + B)(1 + 0.05n)} < 1$$

A_W: 사업장가입자의 평균소득 (> A)
 A_L: 지역가입자의 평균소득 (< A)

(E_T) 가 가 가 가
 가 가 가 가

$$E_T = \frac{S_W E_W + S_L E_L}{0.15(A + B)(1 + 0.05n)}$$

S_W: 전체가입자중 사업장 가입자의 비율
 S_L: 전체가입자중 지역 가입자의 비율

가 가 가 가 10.9%
 가 가 가 가
 14.6% 2002 4.8%
 (2002) 가 2050
 4.6% ~ 4.9% 가

가

가
0.46~0.52

가

가

2 가

0.13~0.15

< 12 >

	가	가	가 ¹⁾
(%)	10.9	-14.6	-4.8

: 1) 가 2002 가

가

가 가

가

가

가 -

-

가

가

가

1

1.34~1.51(가), 1.74~1.79 (가)

0.87~0.98(가), 1.13~1.28

(2)

(가)

가

가

가

(1998)

20.3%

가

가

0.46~0.52

가

2 가

0.13~0.15

OECD

가

(2)

< >

1. 가 (1998) 20.3%
가

30%

< 1> 가 ()

\가	20	30	40
	1.79	1.74	1.96
+	1.24	1.20	1.35
	0.55	0.54	0.61

< 2> 가 (2)

\가	20	30	40
	1.28	1.13	1.21
+	1.06	0.94	1.00
	0.22	0.19	0.21

10%

< 3> 가 ()

\가	20	30	40
	1.79	1.74	1.96
+	1.41	1.37	1.54
	0.38	0.37	0.42

가

< 4> 가

(2)

\가	20	30	40
	1.28	1.13	1.21
	1.20	1.07	1.14
+	0.08	0.05	0.07



(kbpark@kipf.re.kr)

가

(

),

가

가

가

가

가

1.

가

가

가

가

가

t = T/Y

(Y, T)

$$\sum T_i / \sum Y_i$$

$$\sum w_i t_i, w_i = Y_i / \sum Y_i$$

1/n

2.

가 ()
()

가
가

¹⁾
가
가 0 , , 100%

가 가 , 가
1991 2001 36,579
7,333 , 29,246

²⁾
(median)

1) _____ 가 가

2) _____ 가

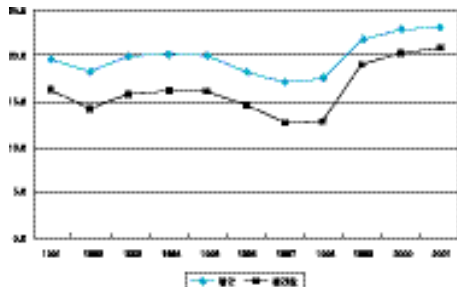
5%p
13% , 20%
30% 1990
25% 15%
가 .

1. ()

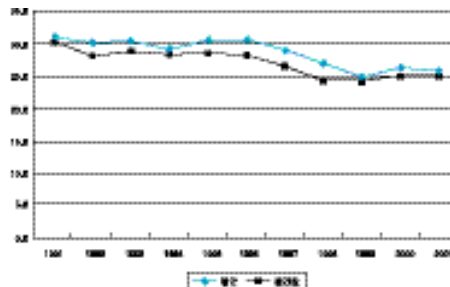
30% 25% 5%p
(1990
가).
1990
34% 1997 28% 6%p , 20% 16%
4%p .

가 . 가
1990 15%
20% 가
가 3 4%
() . 13% ,

[1] ()



[2] ()



(3)

가

$$t = T/(A+B), \tau = T/A, \quad A: \text{영업이익}, B: \text{영업외수지}$$
$$\tau < t \Rightarrow B < 0$$

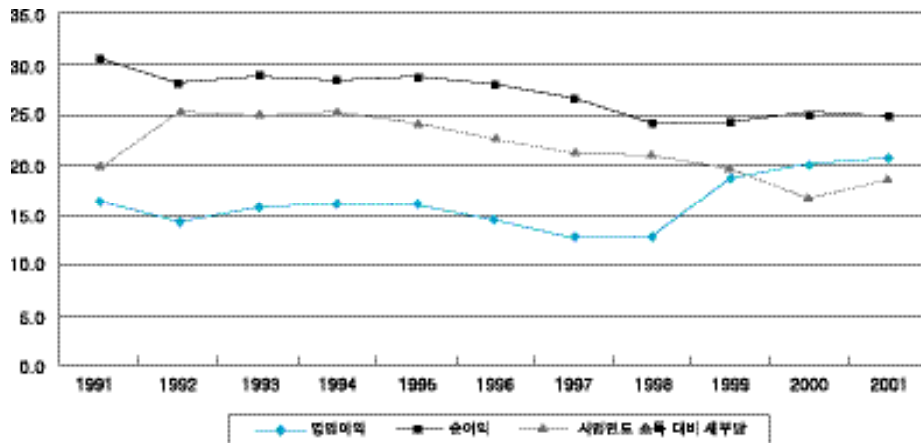
가

가

가

가

[3] ()



2.

가

33% 30% 3%p

가

18%

25%

가

30% 25% 5%p

15% 20% 5%p

가

1996 2%p

6%p 가 1997

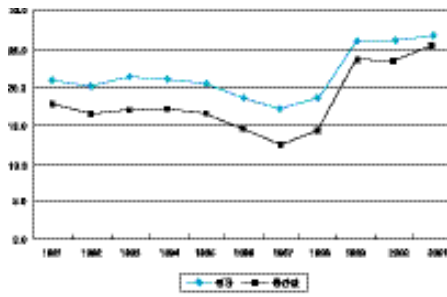
가 4 6%p

30 35%

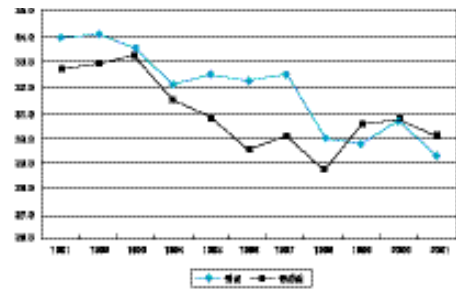
15 35%

35% 20%

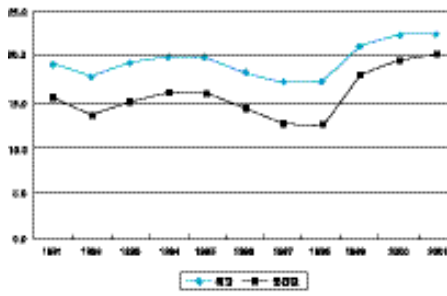
[4] ()



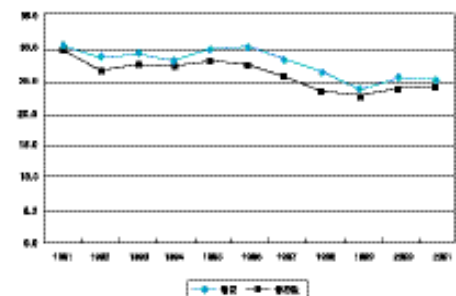
[5] ()



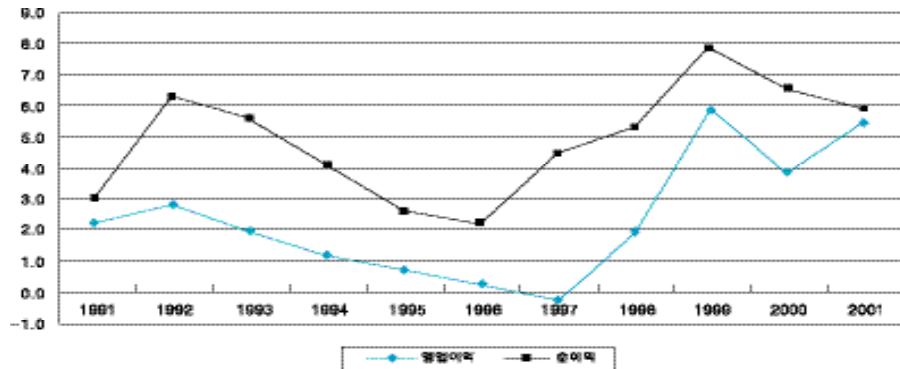
[6] ()



[7] ()

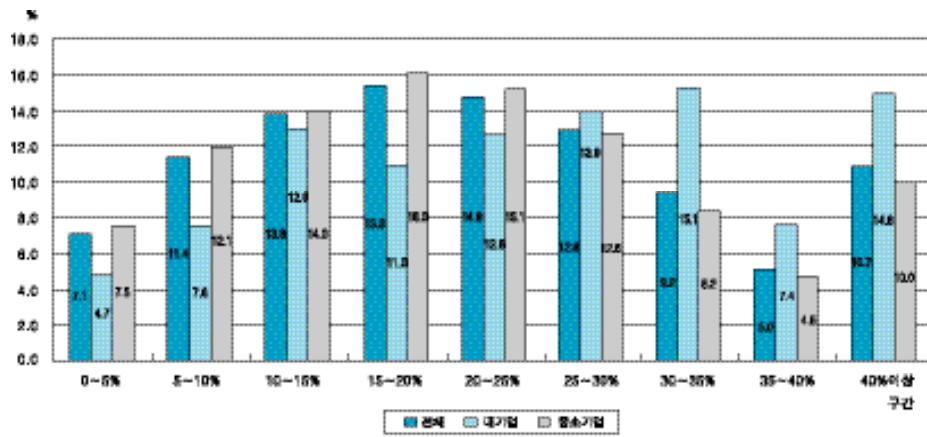


[8]

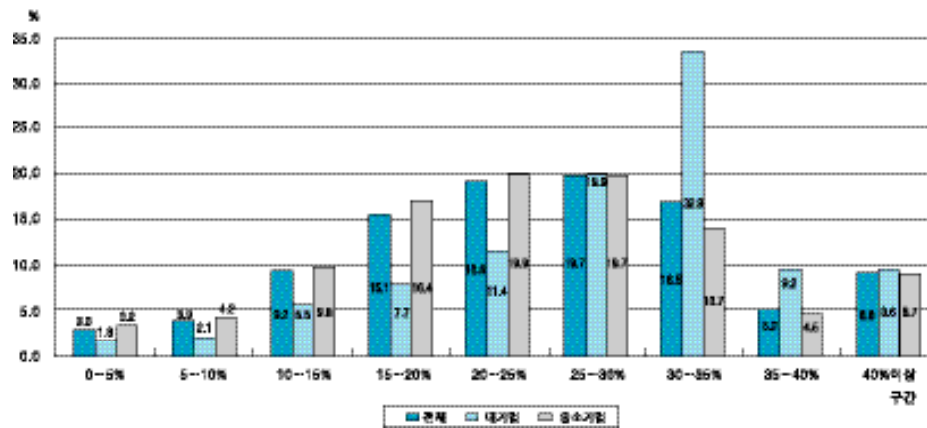


가
 1996 2%p 6%p
 30 35% , 15 35%

[9] (, 2001)

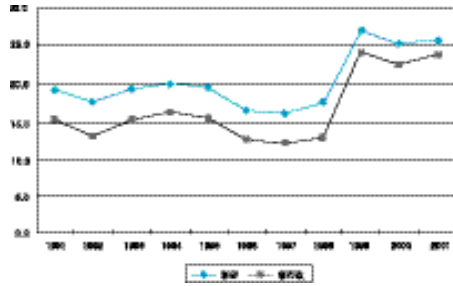


[10] (, 2001)

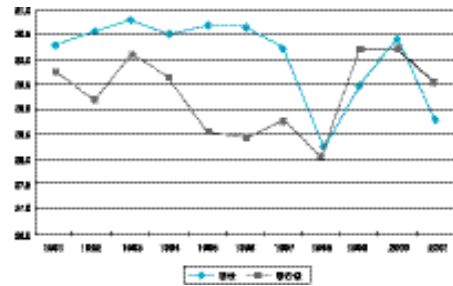


(3)

[11] ()



[12] ()



3.

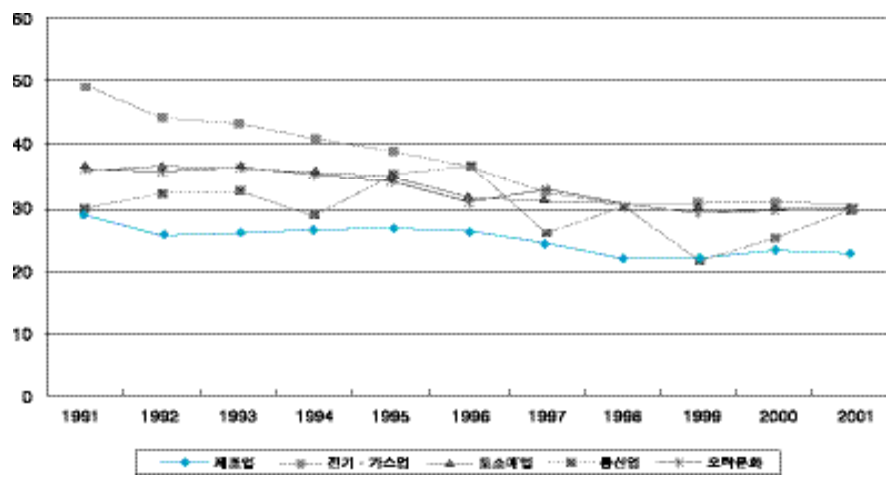
가 , , , , .
 30% 가 . 2000
 2001 22 23% , , 가
 30% 가 7%p

4.

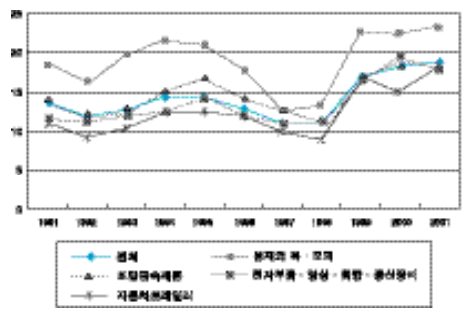
?
 , , , , .
 29% 가 9%p
 20% 가

가 , , ,

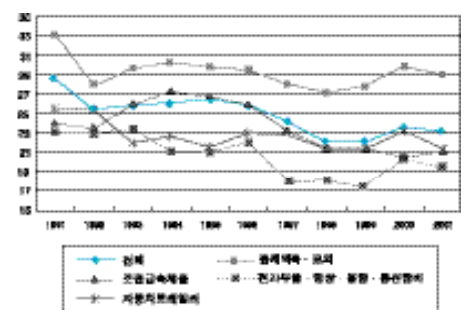
[13] (,)



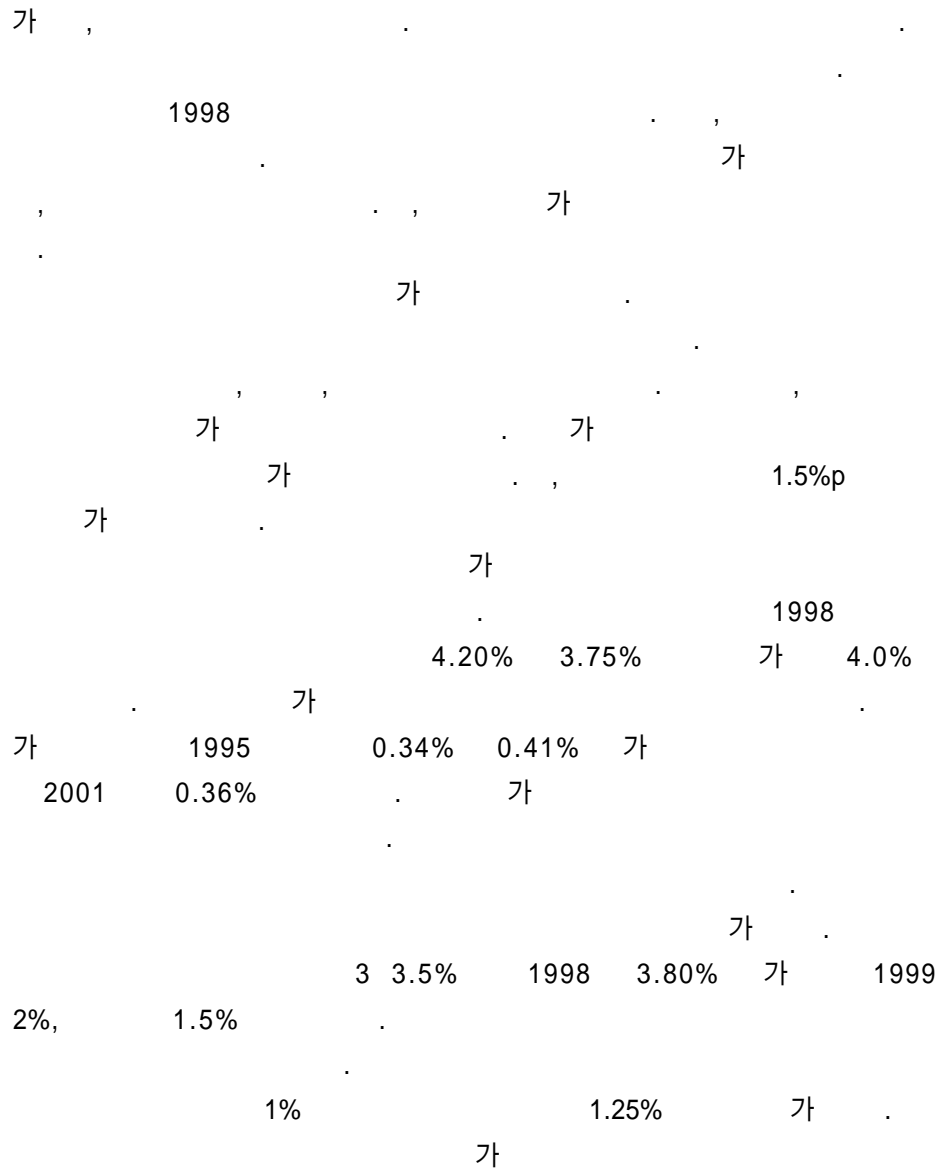
[14] ()



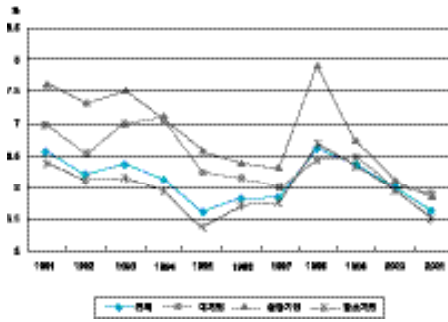
[15] ()



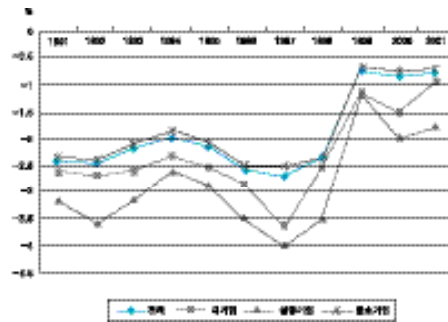
(3)



[16]
()



[17]
()



가

1995

1998

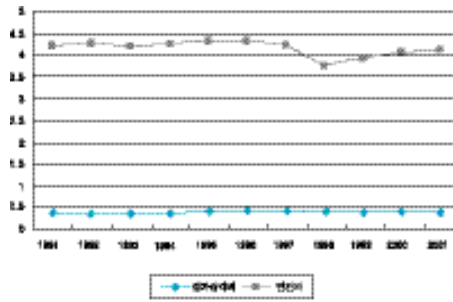
가

가

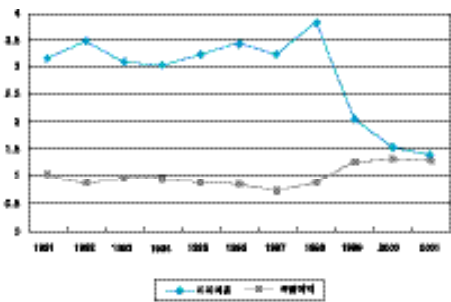
가

1999

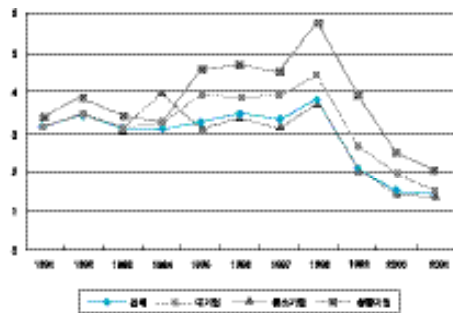
[18] ()



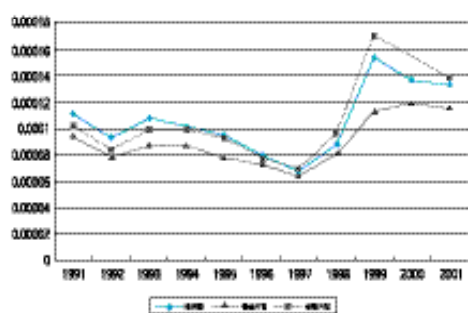
[19] ()



[20] ()



[20]



25% 5%p
 6%p , 4%p
 1991 30%

가



(www.kipf.re.kr)

. < >

- 2002

가 ,

- 2002

EU

가 ,

1990 가 ,

, 가 가

가 ,

가 ,

가

1990

- 1993 (Balladur)

- 1995 (Juppe) 가
 1997
 - 2002
 - (Le Pen)
 (Raffarin)
 - 1990
 , 2002
 가.
 2002 2003 1.2%
 - 2004 2.6% (2.1%)

2002
 GDP 3.1% 2003
 3.4 3.7% 가
 - EU 가
 가 3% 가 ,
 가2
 가 가
 2004 GDP
 2.6%
 가3.4% 2.9% 0.5%p
 -
 , 가 2050
 가 가 GDP 250%
 19% OECD
 - 가 가 ,

< 1 >

(: %)

	2000	2001	2002	2003*	2004*
가	4.2	1.8	1.2	1.2	2.6
	1.7	1.6	1.9	1.6	1.4
	9.4	8.6	8.9	9.3	9.2
**	1.3	1.6	2.1	2.4	2.2

*

** GDP %

2050
가
9%

GDP 6.5%

가

가

- 30 65

75% 가

< 2 >

	(% GDP %)				
	2010 19	2020 29	2030 39	2040 49	2050
1.					
GDP	1.6	1.5	1.7	1.7	1.6
가	2.0	2.0	2.0	2.0	2.0
	70.4	70.5	70.6	70.9	69.1
	-4.9	-8.3	-11.9	-16.1	-18.7
가	77	108	158	225	267
2.					
GDP	1.9	1.8	1.9	1.9	1.9
가	2.2	2.2	2.1	2.1	2.2
	71.3	71.6	73.1	74.8	76.0
	-4.4	-6.8	-9.3	-12.0	-13.6
가	73	96	130	174	202
3. +					
GDP	1.9	1.8	1.9	1.9	1.9
가	2.2	2.2	2.1	2.1	2.2
	71.3	71.6	73.1	74.8	76.0
	-3.3	-4.3	-5.9	-7.6	-8.6
가	68	76	93	117	133
4. + +					
GDP	1.9	1.8	1.9	1.9	1.9
가	2.2	2.2	2.1	2.1	2.2
	71.3	71.6	73.1	74.8	76.0
	-2.8	-2.7	-2.8	-2.7	-2.6
가	67	66	66	66	66

:
: OECD

가GDP

가

, 15 64

- 1

2.4 2030 1.5 , 2050 1.3

- 60 ,

2:1 2030 1:1

2040 66

가

가

가

- 1970 370

2002 590 가 .

24% ,

-

GDP 0.03%

- 65

90% ,

가

- 10% 가

50% ,

36%p

가 ,

가

가

가 ,

- 가

2002 .

가

- 15 24 EU

OECD 가 ,

修學期間

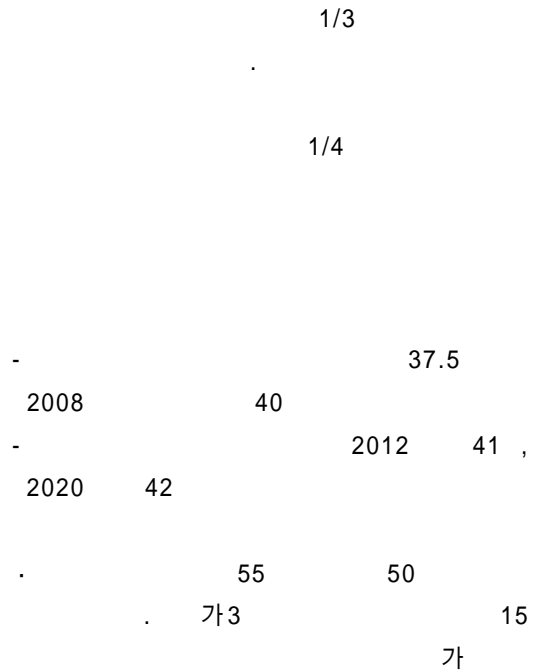
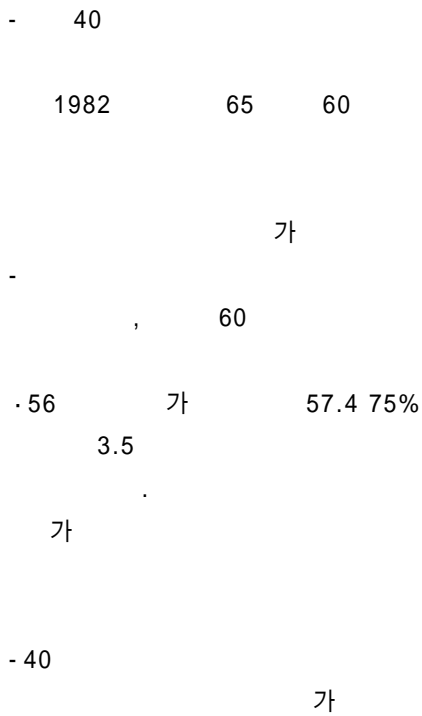
EU 가

가 가

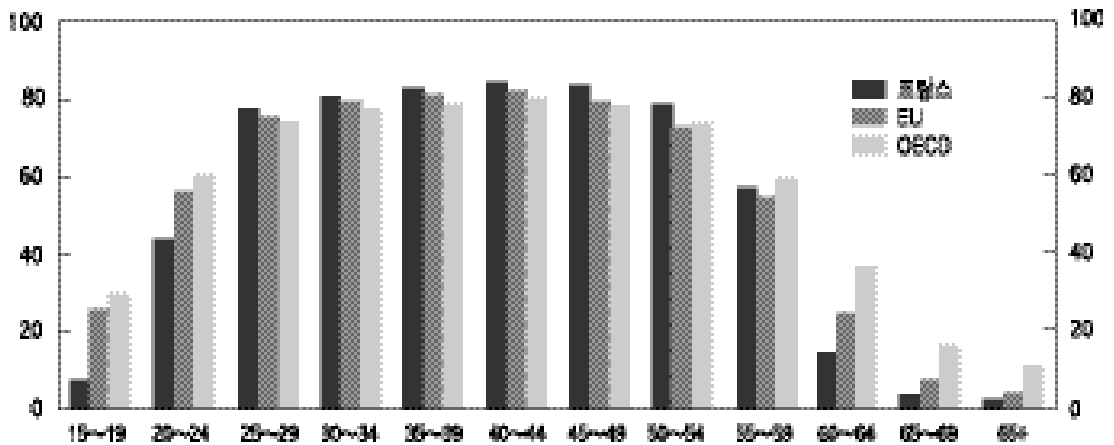
가 가

가

60



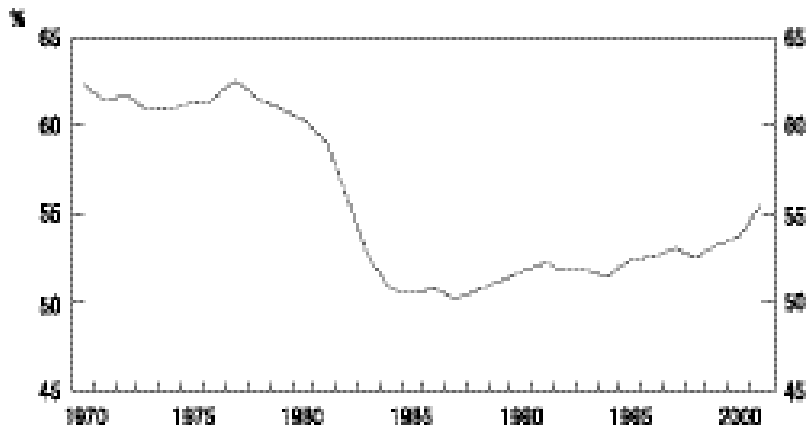
[1] (2001)



. , 40 60
 가
 - 7.85% 2008
 10.35%
 - 6
 3 (25
) 가 가
 - 54 87%
 , 60 78%
 - 1993
 2040 17%p
 가 가

. 가
 가
 ,
 ,
 가 10 25
 가
 - 2003 5
 - 2003 5 27
 - 2003 6 10
 , 6 12 가

[2] 55 59



- 가 7
6,000

가
-2003 6 17 가
4
가

가 가
가



[] ,

가

가 4

가

가

쉴

'3

[] Eichel ,
 6.13 H. Eichel
 3 (2005)
 2004
 2001 , 2003
 2005 3
 2005
 3 * 1
 * 47.0% 42.0%
 17.0% 15.0%
 Eichel 가
)가

[]
 ,
 가
 EU, FTA
 가가 2006
 6 5
 (2003. 9. 1~2006)
 가가 : 18% 가가 2003. 9. 1
 2004. 4. 1 0.5% , 19%
 (2003 9 1)
 . : 60.4% 61% 0.6%
 . : 13.3%
 . () : 27% 28% 1%
 . (,) : 15% 19% 4%

가
 , 가
 , 가
 가 FTA
 FTA (1)
 - -EU FTA (2003. 2. 1) : 1,772 (249)
 - - FTA(2004. 1. 1) : 1,052 (148)
 - - FTA(2004. 1. 1) : 177 (25)
 : 422
 (2)
 - : 1,530 (215)
 - : 720 (100)
 : 315
 (3)
 - 가가 : 2,256 (317)
 - : 393 (55)
 : 372
 365
 (1+2-3)
 [EU] 15~25% 가
 7 1 (EU)
 가가 (VAT)
 , 15

가
15 ~ 25%

ISP

AOL

가

, AOL

가

가

zShop

[] 가 , ()

2004 (

)

가 , 가

가

- 가 ()

가가 500

2003 16 8000

2 (9 1000)

가

9

, 6

가

[] , 2004

6.16 R. Nichols

Bush

*

(debt ceiling, 現7 3,840) 2004. 4

2004. 10

* 1 (2002.6.28): 5 9,500 6 4,000

2 (2003.5.27): 6 4,000 7 3,840

가 *

가

가
 * 1998 2001
 2002 2003 (2002.
 10 2003. 9) 4,000
 ()

[] IMF

IMF

,
 IMF
 가

4%

가
 가 ,

IMF 가 1990

IMF 가

5 1%
 11.4% EU 가
 7 1

[EU]

. . . , ,

가.

1997. 5

가 가
 , ' , 가

가 ,

12 가 ,

65
 70 가

5
 가 2

2006
 60 65

70

92

58 '5 가
65 , 35 가 63 ,
60 ' 가

25%

6.10

가

「Agenda 2010」 (3.14),
2030 (19.1% 22%)
(70% 68%) ,
2011 (65
67)

(40 45) ·
(58 65) ·

, 6

50

3

5. 28

(37.5) 2008
40
(7.85%) (10.35%)

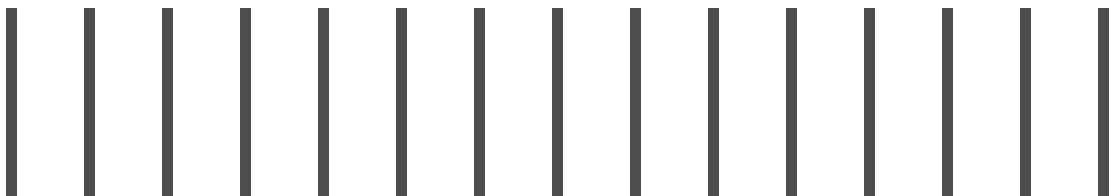
2008
2012 41 , 2020 42

3% 가
가

6



1. 2003 5
2. 가
- 3.
4. 5
5. 2003 7 1 가가





2003 5

2003 6 28

「2003 5

< >

2003 5 160.4

5 145 , 2

29 , 2 17 ,

13 204

(3,524) • (1,415) (5 22
, 38 가)

2003 5 57.5

5 1,847 ,

920 , 549 3,320

2003 5 35.8%(

0.2%p 가)

5,433 1 5,843

(5 185 , 150 가)

1.

가.

(1997 11 2003 5 , :)

	42.2	15.2	20.0	4.2	20.5	102.1
	3.9	1.6	6.3	4.4	17.0	33.2
	14.1	-	-	6.3	0.5	20.9
	-	0.1	2.9	0.1	1.1	4.2
	60.2	16.9	29.2	15.0	39.1	160.4

(1997 11 2003 5 , :)

		33.9	13.7	-	14.0	24.6	86.2
2		2.7	0.2	17.2	-	1.6	21.7
		7.7	-	0.01	-	8.5	16.2
		15.9	2.9	-	0.4	1.8	21.0
		-	-	4.7	-	-	4.7
		-	0.1	7.3	0.6	0.2	8.2
		26.3	3.2	29.2	1.0	12.1	71.8
		-	-	-	-	2.4	2.4
		60.2	16.9	29.2	15.0	39.1	160.4

(1997 11 2003 5 , :)

		47.5	16.9	29.2	8.7	-	102.3
		-	-	-	-	39.1	39.1
		11.8	-	-	6.3	-	18.1
		0.9	-	-	-	-	0.9
		60.2	16.9	29.2	15.0	39.1	160.4

(1997 11 2003 5 , :)

1998		38.8	-	15.7	1.1	55.6	
1999		25.2	5.7	4.6	-	35.5	
2000		8.9	20.0	0.8	7.4	37.1	
2001		29.2	5.1	0.2	7.0	27.1	
2002		-	1.9	-	1.8	3.7	
2003	1/4	-	0.4	-	0.9	1.3	
	4	-	0.1	-	-	0.1	
	5	-	0.02	-	-	-	
		-	0.5	-	0.9	1.4	
		102.1	33.2	20.9	4.2	160.4	

*

0.1



2.

가.

(1997 11 2003 5 , :)

	5.4	9.4	4.2	-			19.0
	1.6	ABS 4.4	AMC, CRC, CRV 1.8	10.4	2.5	10.2	30.9
	1.3	6.3	-			7.6	
							57.5

(1997 11 2003 5 , :)

		1)						
1998	-	-	-	-	2.4	-	2.4	
1999	1.4	2.9	-	4.3	9.7	0.04	14.0	
2000	1.0	2.9	2.2	6.1	8.9	0.005	15.0	
2001	1.4	1.4	1.3	4.1	5.3	-	9.4	
2002	1.2	0.9	0.5	2.6	3.8	6.6	13.0	
2003	1/4	0.3	0.9	0.1	1.3	0.7	2.0	
	4	0.1	0.2	-	0.3	-	1.3	
	5	-	0.2	0.1	0.3	0.1	0.4	
		0.4	1.3	0.2	1.9	0.8	3.7	
		5.4	9.4	4.2	19.0	30.9	7.6	
								57.5

: 1)

3.

가.

(1997 11 2003 5 , : ,)

					()	
	18	18	-	-	1,050(300)	177 (32)
	6	6	-	-	82 (53)	38 (30)
	19	19	-	-	240(166)	92 (62)
	22	22	-	-	218(144)	122(119)
	100	100	-	-	511(373)	307(241)
	302	302	-	-	1,423(590)	679(312)
	467	467	-	-	3,524(1,626)	1,415(796)

(1997 11 2003 5 , : , ,)

					가		가 ()
			1)				
	15	191	168 (165)	798	147	377	35
	5	41	56 (34)	197	46	128	4
	15	222	224 (173)	1,755	277	1,675	73
	22	160	157 (150)	2,699	233	1,483	82
	86	779	962 (762)	4,539	901	4,297	234
	299	3,745	3,727 (2,333)	3,996	3,253	4,318	305
	442	5,138	5,294 (3,617)	13,984	4,857	12,278	733
	10	139	139	1,859	315	1,930	106
	452	5,277	5,433	15,843	5,172	14,208	839

: 1) , ()

< > 5

가. 2003 5 : 204

(:)

			145
			46
		()	(191)
			13
		()	(13)
			204

. 2003 5 : 3,320

(:)

						-
	-	1,851	549			-
		ABS	AMC, CRC, CRV			2,400
	-	20	-	778	104	18
						920
						-
	-	-				-
						3,320



가

2003 6 23

「 가

< >

2003. 6. 21 가 () ()
)
 2003. 6. 24
 7. 1

가
 (2003. 6 2003. 12 6)
 (,)
 가

* 2003 4
 - 28.6%(444 31 7)

* 2003 1 (%)
 -
 1 (5.9), 2 (2.2) 3 (13.8), 4 (24.5),
 5 (31.3)

가가
 (2003. 7. 1 2004. 7. 1 1)
 * : 10/110() 8/108()

< > 가가

가가

: $\frac{1,000}{100} + \frac{100}{100}$ 1,100

가 VAT

: $\frac{1,300}{130} + \frac{130}{130}$ 1,430

가 VAT

: $\frac{130}{100} - \frac{100}{100}$ 30

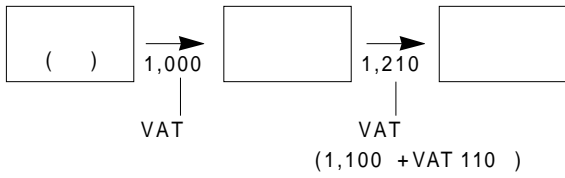
VAT VAT

VAT

VAT

(

10/110)



< 가 >
 VAT 110 - VAT 0 110

< 가 >
 VAT 110 - $\frac{\text{VAT 91}}{1000 \times 10/110}$ 19



2003 6 4

「
< >

」

13

(7.1)

()

2003. 12. 31

() 12

(1 2% 0%)

< >

() 5%

2%p 3%

(1%) (0%)

40%p 가

(71)

2003 : 73

가 (13): 12, () 1

		(, %)	(%)		
2601		1	-	0	()
2602		1	-	0	()
2607		1	-	0	()
2614		1	-	0	()
2701		1	-	0	()
2709	()	5	1	0	1
2709	()	5	-	3	()
2710		5(1)	-	0	()
2710	가 (N.G.L)	5(1)	-	0	()
2814		2	-	0	()
7203		1	-	0	()
7402		2	-	0	()
7501		1	-	0	()



5

2003 6 12

「5

< >

6 11 (), 7
()
1 5 . .

가100 300

5 ,
4 10

1 5 66.1
(157.2) 42.0%
8.2 , 4.9%p 가

SOC

	2001.15	2002.1 5 (A)	2003 1 5 (B)	(B-A)
. ()	49.0	57.9	66.1	8.2
. (%)	32.4	37.1	42.0	4.9%p

. 가 8 가

가

1 5

(:)

	2003					2002	
		1/4	4 5	1 5	(%)	1 5	(%)
	157.2	39.3	26.7	66.1	42.0	57.9	37.1
	118.0	31.7	19.8	51.5	43.6	43.5	36.9
	21.8	4.3	3.5	7.9	36.1	7.8	36.3
	17.4	3.3	3.4	6.7	38.5	6.6	40.0



2003 7 1 가

2003 6 24 가 「2003 7 1 가」
< >

7 1	(50,342)	2003 7 1
- 2002 가가4,800		가
- 2003 6 30 가		
가 " 2003 2		1.
가		
(40,452)		가가
- 2002 가가 4,800		- 가()가 4,800
가		
4,800		
가 (
74)		
,		
()		
3 (30 4)		
		7 1
		- 가가 4,800
		,
		- 가가 4,800
		,
		가 (,)

	가 x10%	가가4,800	가가4,800	가가 x10%
			가x x 가	가가
			1 (6)	가가1,200

가 .
(2003-18 ㄱ)
2. 7 1
2002 가가4,800 (50,342)
2002 가가 4,800 (40,452)
4,800
가 (74)
, , ,
. , , 96
. 가, 가 1,223

3
4)
3 (2000. 6. 30) 2002
가가4,800
(78)
3. 가
- 가가 x10% 2 4% (10%)
- 가



- 가
가

() 2%(가가)가

20%× 10%)
10%

- 2003. 6. 30 가 2003
1 가가 “
가 ”
2003 2 가가

- 가가 가 .

· · ·

· =
· · · 가 ×2/102
(3/103)

- 가 가
2% 500

- , 가 가 ,

가
가

가 ()가

< >
(www.nts.go.kr) 「
· 」
·

가 2003 1
가가 “
가 ”
2003 2 가가

가
가 가

가가

가 가

가 가

「
」

4.

- 「 」 (6. 10)

-

- 6 20

< >
2003 1

- 2003 7 1 7 1
7 25 2003 1 가가

< >
가

. .
· = $\times 10/11 \times (1 - \text{가가})$
)
가가 : 2003 1 가가

가

2001 12 31
· = 가 $\times (1 - 10/100)$) $\times 10/110$
 $\times (1 - \text{가가})$

2002 1 1
· = 가 $\times (1 - 5/100 \times \text{가가})$) $\times 10/110$
 $\times (1 - \text{가가})$

가
· = 가 $\times (1 - 25/100)$) $\times 10/110$
 $\times (1 - \text{가가})$
가가 : 가
가가

가

. .
· = $\times 10/10 \times (1 - \text{가가})$
가가)
가가 : 2003. 2 가가

가

2001 12 31
· = 가 $\times (1 - 10/100)$) $\times 10/100$
 $\times (1 - \text{가가})$

2002 1 1
· = 가 $\times (1 - 5/100 \times \text{가가})$) $\times 10/100$
 $\times (1 - \text{가가})$

가
· = 가 $\times (1 - 25/100)$) $\times 10/100$
 $\times (1 - \text{가가})$
가가 : 2003 2 가가



•

•

- 1.
- 2.
- 3.
- 4.

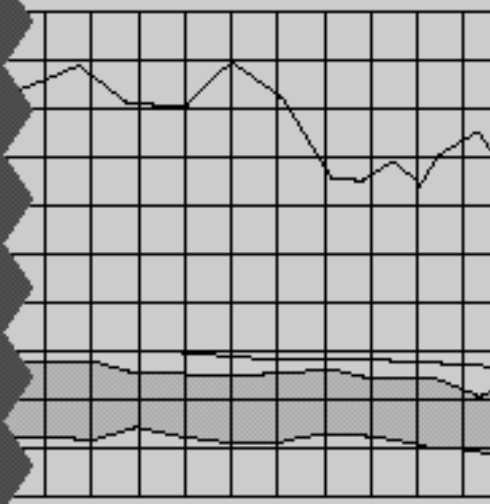
()

()

()

()

•



1.

()

(:)

				-				
1990		22,914,045	5,132,197	17,781,848	4,485,654	1,401,590	918,591	871,530
		6,378,583	2,091,676	4,286,907	1,503,226	547,630	327,268	315,094
		9,323,964	2,286,521	7,037,444	1,942,081	568,948	401,749	389,775
		2,764,654	14,954	2,749,700	100,211	10,725	13,044	7,143
		-	-	-	-	-	-	-
		53,806	53,806	-	-	-	-	-
		2,136,803	178,146	1,958,657	289,955	99,609	62,144	43,683
		2,256,235	507,094	1,749,141	650,182	174,678	114,386	115,836
		-	-	-	-	-	-	-
1991		29,742,208	6,301,167	23,441,041	5,647,600	1,772,761	1,122,278	1,129,087
		8,035,075	2,540,753	5,494,322	1,928,395	688,096	408,667	408,686
		15,291,635	3,202,450	12,089,185	3,149,519	915,516	573,895	671,240
		3,452,403	-	3,452,403	139,803	26,193	25,586	9,156
		557,031	-	557,031	111,406	39,508	23,432	16,956
		-	-	-	-	-	-	-
		2,406,063	557,964	1,848,100	318,477	103,447	90,697	23,049
		-	-	-	-	-	-	-
		-	-	-	-	-	-	-
1992		34,691,954	7,272,161	27,419,793	7,061,844	2,437,969	1,386,057	1,376,173
		9,462,206	2,907,143	6,555,063	2,291,397	819,874	484,873	475,758
		15,528,603	3,545,061	11,983,542	3,529,569	1,389,767	506,718	754,504
		3,925,064	1,145	3,923,919	125,885	15,914	23,021	7,683
		1,230,602	-	1,230,602	140,729	53,414	35,341	26,307
		-	-	-	-	-	-	-
		1,750,414	210,435	1,539,979	336,748	89,822	98,985	17,965
		2,795,065	608,377	2,186,688	637,516	69,178	237,119	93,956
		-	-	-	-	-	-	-
1993		37,794,508	7,596,889	30,197,619	7,851,244	2,539,978	1,546,269	1,716,332
		11,025,781	3,259,783	7,765,998	2,690,006	953,140	578,199	547,762
		15,564,527	3,069,675	12,494,852	3,754,726	1,289,896	601,259	985,592
		4,412,413	750	4,411,663	150,591	22,836	20,140	8,855
		1,421,075	-	1,421,075	189,614	60,250	39,083	28,731
		-	-	-	-	-	-	-
		2,169,097	216,856	1,952,241	306,253	88,763	95,841	30,428
		3,201,615	1,049,825	2,151,790	760,054	125,093	211,747	114,964
		-	-	-	-	-	-	-
1994		44,417,354	8,749,353	35,668,001	9,020,005	2,730,229	2,254,224	1,846,272
		13,227,759	3,849,975	9,377,784	3,145,366	1,071,900	723,620	617,049
		17,930,484	3,180,814	14,749,670	4,167,484	1,186,749	1,055,266	984,032
		4,821,432	30	4,821,402	153,890	26,778	19,956	8,072
		1,696,086	-	1,696,086	173,379	49,603	36,430	30,869
		-	-	-	-	-	-	-
		3,131,765	395,951	2,735,814	515,352	176,279	155,560	84,207
		3,609,828	1,322,583	2,287,245	864,534	218,920	263,392	122,043
		-	-	-	-	-	-	-
1995		52,378,910	9,332,198	43,046,712	10,935,202	3,332,665	2,641,369	2,338,869
		15,316,913	4,339,477	10,977,436	3,609,091	1,214,752	814,937	767,113
		20,746,487	3,629,132	17,117,355	4,784,612	1,233,129	1,195,733	1,199,500
		5,674,580	1,800	5,672,780	240,705	31,860	42,753	58,103
		1,870,124	-	1,870,124	207,740	57,558	46,321	33,130
		-	-	-	-	-	-	-
		4,109,221	423,185	3,686,036	618,662	160,089	211,950	132,047
		-	-	-	-	-	-	-
		4,661,585	938,604	3,722,981	1,474,392	635,277	329,675	148,976
1996		63,085,526	11,254,545	51,830,981	12,855,986	4,142,677	2,935,172	2,717,920
		17,396,462	4,892,331	12,504,131	4,085,484	1,423,591	925,755	852,739
		27,611,045	4,921,897	22,689,148	6,181,615	2,035,865	1,324,974	1,332,815
		6,372,664	1,097	6,371,567	261,111	47,479	36,801	67,644

1.

() ()

(:)

				-				
		151,157	-	151,157	6,280	1,780	116	4,114
		2,574,420	-	2,574,420	284,919	74,691	68,106	47,331
		-	-	-	-	-	-	-
		4,930,017	493,628	4,436,389	835,133	234,183	248,527	198,335
		4,049,761	945,592	3,104,169	1,201,444	325,088	330,893	214,942
		-	-	-	-	-	-	-
1997		69,571,628	11,538,833	58,032,795	15,276,583	4,405,460	3,409,744	2,847,398
		18,497,728	5,332,578	13,165,154	4,657,933	1,407,263	895,671	953,300
		31,163,235	5,072,565	26,090,670	7,207,779	2,091,765	1,455,655	1,329,855
		6,785,682	2,786	6,782,896	306,279	54,708	43,382	69,265
		228,909	-	228,909	8,300	2,391	253	5,052
		2,877,166	-	2,877,166	357,589	106,093	68,129	53,755
		15,300	-	15,300	15,300	-	-	-
		5,545,567	393,984	5,151,583	1,092,151	354,821	205,816	229,833
		4,458,041	736,923	3,721,118	1,631,252	388,419	740,838	206,338
		-	-	-	-	-	-	-
1998		69,120,708	10,612,820		15,151,112	4,473,804	3,421,869	2,862,465
		17,148,290	4,944,434		4,291,083	1,310,666	825,578	867,296
		29,367,420	4,404,543		6,471,690	1,806,163	1,411,488	1,276,109
		7,039,526	3,145		312,855	44,754	38,293	79,678
		294,979	-		19,136	12,470	98	4,977
		2,885,525	-		347,047	91,175	72,641	54,178
		-	-		-	-	-	-
		7,766,452	554,907		1,735,754	547,442	326,649	349,986
		4,618,519	708,791		1,973,547	661,134	747,122	230,241
		-	-	-	-	-	-	-
1999		73,125,735	11,581,131		16,585,606	5,271,005	3,507,752	2,882,873
		18,568,564	5,566,120		4,519,903	1,383,722	869,229	888,653
		29,751,086	4,018,964		7,025,293	2,221,283	1,490,525	1,225,105
		6,535,394	80,948		351,888	56,090	48,947	91,969
		383,321	-		60,543	33,622	2,201	2,799
		2,906,139	-		344,553	91,482	63,247	55,537
		-	-		-	-	-	-
		9,687,534	897,490		2,088,878	643,976	430,171	398,354
		5,293,697	1,017,609		2,194,548	840,830	603,432	220,456
		-	-	-	-	-	-	-
2000		77,176,148	12,618,608	64,557,540	16,283,649	4,558,139	3,529,097	2,992,045
		20,361,600	6,204,198	14,157,402	4,883,344	1,431,784	931,264	1,015,241
		31,531,452	4,801,587	26,729,865	7,085,098	2,220,367	1,370,710	1,303,564
		8,244,954	9,493	8,235,461	393,547	66,072	50,830	92,332
		204,442	-	204,442	21,987	2,026	154	3,116
		3,713,447	-	3,713,447	399,707	88,449	89,715	68,830
		-	-	-	-	-	-	-
		-	-	-	-	-	-	-
		9,892,702	796,939	9,095,763	2,353,778	566,943	593,770	399,769
		3,227,551	806,391	2,421,160	1,146,188	182,498	492,654	109,193
		-	-	-	-	-	-	-
2001		93,995,619	14,619,028	79,376,591	19,274,357	5,517,992	3,985,007	3,743,200
		26,639,924	7,934,081	18,705,843	6,022,470	1,782,620	1,107,077	1,292,829
		35,983,274	5,247,900	30,735,374	8,040,783	2,426,882	1,461,259	1,606,428
		12,209,985	6,010	12,203,975	822,996	201,974	103,427	169,245
		140,063	-	140,063	20,949	1,053	5,788	2,167
		4,628,105	-	4,628,105	518,988	112,774	98,867	87,562
		-	-	-	-	-	-	-
		-	-	-	-	-	-	-
		11,177,968	700,120	10,477,848	2,550,462	681,237	673,286	394,088
		3,216,300	730,917	2,485,383	1,297,709	311,452	535,303	190,881

1.

() ()

(:)

				1)				
1990		624,255	669,689		13,296,194	3,263,787	1,215,469	871,631
		146,884	166,351		2,783,681	997,724	181,500	150,544
		260,330	321,279		5,095,363	1,402,095	358,793	295,187
		47,079	22,220		2,649,489	250,459	383,668	242,480
		-	-		-	-	-	-
		-	-		-	-	-	-
		39,291	45,228		1,668,702	245,123	213,168	150,246
		130,671	114,611		1,098,960	368,385	78,341	33,174
	-	-		-	-	-	-	
1991		875,544	747,931		17,793,441	4,610,901	1,501,436	1,102,730
		191,700	231,246		3,565,926	1,283,473	215,272	197,812
		558,040	430,827		8,939,666	2,736,781	691,786	504,649
		47,343	31,525		3,312,600	316,643	418,173	256,091
		18,064	13,445		445,625	45,655	48,077	36,166
		-	-		-	-	-	-
		60,396	40,887		1,529,623	228,349	128,129	108,013
		-	-		-	-	-	-
	-	-		-	-	-	-	
1992		924,841	936,804		20,357,949	5,346,206	1,635,600	1,338,207
		237,356	273,536		4,263,666	1,572,193	257,006	231,560
		435,441	443,139		8,453,973	2,616,541	653,657	607,577
		49,199	30,068		3,798,034	319,630	445,131	291,892
		-	25,667		1,089,873	189,239	103,072	82,755
		-	-		-	-	-	-
		93,040	36,936		1,203,231	144,094	102,989	69,076
		109,805	127,458		1,549,172	504,509	73,745	55,347
	-	-		-	-	-	-	
1993		1,068,753	979,912		22,346,375	5,918,444	1,759,657	1,421,285
		259,406	351,499		5,075,992	2,060,568	276,471	275,170
		411,423	466,556		8,740,126	2,775,034	605,408	555,459
		68,536	30,224		4,261,072	358,067	510,524	324,630
		34,557	26,993		1,231,461	191,504	133,360	99,749
		-	-		-	-	-	-
		63,856	27,365		1,645,988	199,159	139,479	88,648
		230,975	77,275		1,391,736	334,112	94,415	77,629
	-	-		-	-	-	-	
1994		999,324	1,189,956		26,647,996	7,358,174	1,971,658	1,608,533
		322,050	410,747		6,232,418	2,608,438	341,101	316,781
		388,209	553,228		10,582,186	3,558,210	684,607	589,559
		67,232	31,852		4,667,512	378,655	550,695	395,485
		32,902	23,575		1,522,707	208,646	164,082	111,702
		-	-		-	-	-	-
		69,767	29,539		2,220,462	245,300	166,773	136,547
		119,164	141,015		1,422,711	358,925	64,400	58,459
	-	-		-	-	-	-	
1995		1,361,804	1,260,495		32,111,510	9,092,824	2,448,222	2,089,754
		368,391	443,898		7,368,345	3,152,186	401,597	392,668
		655,908	500,342		12,332,743	4,392,201	762,674	783,910
		82,891	25,098		5,432,075	382,113	657,843	448,143
		39,849	30,882		1,662,384	213,739	188,501	129,984
		-	-		-	-	-	-
		60,210	54,366		3,067,374	277,347	276,187	165,695
		-	-		-	-	-	-
	154,555	205,909		2,248,589	675,238	161,420	169,354	
1996		1,759,951	1,300,276		38,974,995	11,189,228	3,269,127	2,517,141
		413,812	469,597		8,418,647	3,561,393	455,980	452,698
		891,146	596,815		16,507,533	6,053,656	1,097,353	1,094,237
		81,611	27,576		6,110,456	401,065	767,555	476,619

1.

() ()

(:)

				1)				
		89	181		144,877	9,470	19,768	6,064
		50,056	44,735		2,289,501	292,773	259,072	182,480
		-	-		-	-	-	-
		83,904	70,184		3,601,256	428,904	491,411	200,139
		239,333	91,188		1,902,725	441,967	177,988	104,904
		-	-		-	-	-	-
1997		1,980,334	1,403,280	1,230,367	42,756,212	12,734,211	3,805,162	2,683,447
		476,171	488,283	437,245	8,507,220	3,801,646	500,236	451,421
		1,045,626	597,961	686,917	18,882,891	7,103,617	1,582,118	1,138,158
		85,729	35,320	17,875	6,476,617	411,827	831,575	506,651
		94	372	138	220,609	12,328	37,188	18,352
		48,961	52,327	28,324	2,519,577	335,910	280,211	200,592
		-	-	15,300	-	-	-	-
		146,520	125,791	29,370	4,059,432	404,883	427,133	264,703
		177,233	103,226	15,198	2,089,866	664,000	146,701	103,570
		-	-	-	-	-	-	-
1998		1,968,342	1,429,345	995,487	43,356,776	12,497,352	3,832,278	2,874,793
		445,580	443,743	398,220	7,912,773	3,520,308	469,462	415,483
		1,027,650	537,620	412,660	18,494,187	6,653,439	1,555,074	1,193,295
		85,559	37,469	27,102	6,723,526	427,552	826,103	520,554
		588	132	871	275,840	9,243	21,230	96,017
		44,772	51,697	32,584	2,538,478	331,114	279,308	196,052
		-	-	-	-	-	-	-
		233,691	212,585	65,401	5,475,791	827,997	512,935	351,441
		130,502	146,099	58,449	1,936,181	727,699	168,166	101,951
		-	-	-	-	-	-	-
1999		1,995,188	1,662,924	1,265,864	44,958,998	13,209,538	3,888,255	2,834,733
		435,397	507,336	435,566	8,482,541	3,917,932	470,683	452,825
		914,523	691,576	482,281	18,706,829	6,406,002	1,407,110	1,294,200
		83,991	35,515	35,376	6,102,558	397,335	767,726	489,676
		8,873	11,067	1,441	322,778	42,835	27,759	23,378
		45,286	47,499	41,502	2,561,586	340,103	264,628	181,305
		-	-	-	-	-	-	-
		304,681	223,697	87,999	6,701,166	1,372,888	780,702	361,557
		202,437	145,694	181,699	2,081,540	732,443	169,647	31,792
		-	-	-	-	-	-	-
2000		2,021,281	1,825,320	1,357,767	48,273,891	14,258,187	4,152,722	2,902,714
		484,269	555,673	465,113	9,274,058	4,331,141	498,120	474,337
		912,702	763,214	514,541	19,644,767	7,103,919	1,638,359	1,200,797
		100,258	46,290	37,765	7,841,914	532,920	986,292	603,939
		77	15,183	1,431	182,455	7,367	18,952	12,731
		48,568	48,845	55,300	3,313,740	468,044	370,391	245,874
		-	-	-	-	-	-	-
		326,953	268,801	197,542	6,741,985	1,290,321	561,270	357,625
		148,454	127,314	86,075	1,274,972	524,475	79,338	7,411
2001		2,400,419	2,082,892	1,544,847	60,102,234	17,659,609	5,125,246	3,572,881
		583,547	687,863	568,534	12,683,373	6,431,974	643,919	603,108
		1,083,012	873,387	589,815	22,694,591	8,001,626	1,552,453	1,251,468
		152,632	91,798	103,920	11,380,979	789,964	1,430,307	896,425
		32	11,083	826	119,114	4,949	7,149	3,334
		58,427	54,903	106,455	4,109,117	567,976	441,353	312,998
		-	-	-	-	-	-	-
		-	-	-	-	-	-	-
		399,870	300,657	101,324	7,927,386	1,405,353	925,644	453,396
		122,899	63,201	73,973	1,187,674	457,767	124,421	52,152

1.

() ()

(:)

1990		1,090,527 169,577 417,867 275,723 - - 179,210 48,150 -	1,123,162 196,986 353,067 293,859 - - 174,898 104,351 -	1,515,391 197,511 515,336 408,306 - - 239,536 154,702 -	1,525,013 316,979 503,214 426,177 - - 209,007 69,636 -	2,422,398 505,589 1,176,502 288,925 - - 224,721 226,661 -	268,816 67,270 73,302 79,892 - - 32,792 15,559 -
1991		1,452,873 232,676 636,825 363,243 53,805 - - 166,323 - -	1,649,458 238,397 805,446 378,919 41,524 - - 185,172 - -	2,010,325 240,164 930,662 532,719 65,480 - - 241,300 - -	2,123,563 407,807 873,751 551,337 78,291 - - 212,376 - -	2,965,871 660,687 1,618,503 393,285 60,933 - - 232,463 - -	376,284 89,638 141,264 102,189 15,694 - - 27,499 - -
1992		1,715,252 267,187 686,282 422,389 106,280 - 149,156 83,958 -	1,849,515 275,798 672,108 433,473 118,429 - 169,702 180,005 -	2,115,154 286,557 759,974 619,479 136,166 - 205,044 107,934 -	2,557,030 475,797 894,888 660,300 164,767 - 150,193 211,085 -	3,293,375 787,918 1,384,497 485,783 154,855 - 188,000 292,322 -	507,610 109,650 178,449 119,957 34,310 - 24,977 40,267 -
1993		2,015,076 312,369 775,771 472,171 132,508 - - 182,819 139,438 -	2,058,808 317,940 785,946 492,783 126,572 - - 216,202 119,365 -	2,255,321 306,830 758,219 702,408 130,535 - - 280,281 77,048 -	2,701,432 538,626 853,353 724,966 192,823 - - 252,632 139,032 -	3,658,382 867,134 1,429,619 539,814 188,413 - - 255,807 377,595 -	557,970 120,884 201,317 135,709 35,997 - - 30,961 33,102 -
1994		2,214,032 384,713 776,608 484,316 159,398 - 229,255 179,742 -	2,512,552 360,933 1,028,146 559,420 173,756 - 281,338 108,959 -	2,674,711 345,683 891,949 778,714 219,126 - 353,785 85,454 -	3,305,260 657,724 1,079,407 799,323 245,176 - 375,527 148,103 -	4,372,228 1,074,677 1,732,955 580,199 200,310 - 389,107 394,980 -	630,848 142,368 240,745 140,705 40,511 - 42,830 23,689 -
1995		2,879,247 466,587 927,386 602,008 160,340 - - 542,351 - 180,575	3,003,393 455,512 1,107,637 643,973 183,265 - - 412,451 - 200,555	3,348,111 411,100 1,071,181 903,425 236,785 - - 517,340 - 208,280	3,595,926 723,592 1,107,110 922,489 267,662 - - 376,769 - 198,304	4,934,701 1,195,509 1,964,690 707,255 236,938 - - 424,489 - 405,820	719,332 169,594 215,954 164,826 45,170 - - 74,745 - 49,043
1996		3,360,802 553,161 1,355,926 682,635	3,629,460 480,275 1,447,507 729,023	4,101,958 502,836 1,418,647 1,026,466	4,257,832 845,786 1,375,751 1,053,248	5,789,684 1,387,076 2,405,601 795,614	861,763 179,442 258,855 178,231

1.

() ()

(:)

		27,192	14,130	20,494	12,464	31,688	3,607
		208,347	266,575	333,980	359,641	330,120	58,513
		-	-	-	-	-	-
		410,861	481,195	618,542	422,323	434,470	113,411
		122,680	210,755	180,993	188,619	405,115	69,704
		-	-	-	-	-	-
1997		3,554,542	3,906,884	4,784,267	4,660,274	5,423,434	1,203,991
		586,642	517,613	506,554	864,496	1,082,939	195,673
		1,286,551	1,643,498	1,835,149	1,540,575	2,413,589	339,636
		724,545	770,540	1,102,086	1,103,858	830,733	194,802
		40,122	22,584	28,342	16,834	40,549	4,310
		234,054	260,531	376,697	401,850	352,212	77,520
		-	-	-	-	-	-
		507,279	545,555	764,672	528,523	466,421	150,263
		175,349	146,563	170,767	204,138	236,991	241,787
		-	-	-	-	-	-
1998		3,598,315	3,869,590	4,971,004	5,150,433	5,403,126	1,159,885
		550,901	509,453	479,463	804,323	962,431	200,949
		1,289,363	1,555,822	1,927,130	1,517,164	2,351,220	451,680
		734,615	821,337	1,149,733	1,160,985	885,342	197,305
		39,751	1,739	40,104	22,561	37,753	7,442
		247,399	271,218	373,391	387,864	371,482	80,650
		-	-	-	-	-	-
		614,531	585,231	861,198	930,069	646,497	145,802
		121,755	124,700	139,985	327,467	148,401	76,057
		-	-	-	-	-	-
1999		3,766,330	3,677,611	5,119,802	5,451,817	5,845,764	1,165,148
		576,775	509,389	513,022	859,062	971,728	211,125
		1,393,618	1,359,955	1,996,121	2,015,215	2,476,641	357,967
		647,306	739,739	1,039,860	1,044,361	808,573	167,982
		39,959	37,932	57,298	39,528	45,055	9,034
		251,430	285,500	365,205	391,136	390,966	91,313
		-	-	-	-	-	-
		657,081	625,216	1,020,125	852,537	809,225	221,835
		200,161	119,880	128,171	249,978	343,576	105,982
		-	-	-	-	-	-
2000		4,104,700	3,962,660	5,646,804	5,757,033	6,203,851	1,285,220
		633,908	530,669	562,045	948,694	1,060,249	234,895
		1,404,400	1,310,727	1,981,415	1,980,614	2,647,231	377,305
		852,503	944,656	1,349,348	1,323,464	1,019,866	228,926
		19,113	-	64,846	25,589	28,403	5,454
		338,750	341,779	461,734	514,248	464,871	108,049
		-	-	-	-	-	-
		653,375	682,991	1,124,132	886,741	933,073	252,457
		202,651	151,838	103,284	77,683	50,158	78,134
		-	-	-	-	-	-
2001		5,130,495	5,026,229	7,008,173	7,079,104	7,878,379	1,622,118
		801,859	658,176	702,773	1,151,559	1,362,461	327,544
		1,751,680	1,597,435	2,449,550	2,334,900	3,333,253	422,226
		1,214,304	1,314,469	1,903,250	1,905,377	1,568,089	358,794
		9,642	22,573	45,890	11,602	11,753	2,222
		429,982	438,321	603,512	620,145	571,038	123,792
		-	-	-	-	-	-
		-	-	-	-	-	-
		810,077	874,002	1,184,377	986,634	970,404	317,499
		112,951	121,253	118,821	68,887	61,381	70,041

: 1)1997

:

P

a

2.

()

(:)

1990		15,491,028 6,378,583 3,979,614 2,764,654 - 53,806 1,988,026 326,345 -	3,258,347 2,091,676 1,049,785 14,954 - 53,806 45,121 3,005 -	12,232,681 4,286,907 2,929,829 2,749,700 - - 1,942,906 323,340 -	2,827,565 1,503,226 735,865 100,211 - - 274,204 214,060 -	928,920 547,630 219,424 10,725 - - 99,609 51,533 -	620,910 327,268 144,919 13,044 - - 62,144 73,535 -	548,490 315,094 168,719 7,143 - - 36,074 21,461 -
1991		19,903,784 8,035,075 6,071,682 3,452,403 557,031 - 1,787,592 - -	3,936,848 2,540,753 1,300,462 - - - 95,633 - -	15,966,936 5,494,322 4,771,221 3,452,403 557,031 - 1,691,959 - -	3,743,804 1,928,395 1,307,370 139,803 111,406 - 256,830 - -	1,209,139 688,096 362,039 26,193 39,508 - 93,303 - -	853,893 408,667 312,239 25,586 23,432 - 83,969 - -	745,972 408,686 294,392 9,156 16,956 - 16,782 - -
1992		22,078,671 9,462,206 6,658,109 3,925,064 53,414 - 1,335,933 643,945 -	4,300,570 2,907,143 1,348,393 1,145 - - 42,650 1,239 -	17,778,101 6,555,063 5,309,716 3,923,919 53,414 - 1,293,283 642,706 -	4,418,765 2,291,397 1,326,035 125,885 53,414 - 242,334 379,700 -	1,444,432 819,874 427,877 15,914 53,414 - 79,377 47,976 -	1,048,923 484,873 248,652 23,021 - - 92,016 200,361 -	868,216 475,758 345,299 7,683 - - 13,992 25,484 -
1993		23,700,272 11,025,781 5,993,498 4,412,413 60,250 - 1,743,491 464,839 -	4,510,906 3,259,783 1,197,443 750 - - 48,523 4,407 -	19,189,366 7,765,998 4,796,055 4,411,663 60,250 - 1,694,968 460,432 -	4,546,540 2,690,006 1,269,465 150,591 60,250 - 219,109 157,119 -	1,586,062 953,140 446,589 22,836 60,250 - 75,332 27,915 -	836,295 578,199 182,455 20,140 - - 42,862 12,639 -	966,758 547,762 343,576 8,855 - - 25,295 41,270 -
1994		30,279,950 13,227,759 7,737,981 4,821,432 1,696,086 - 2,337,104 459,588 -	5,008,445 3,849,975 1,094,299 30 - - 58,641 5,500 -	25,271,505 9,377,784 6,643,682 4,821,402 1,696,086 - 2,278,463 454,088 -	5,679,760 3,145,366 1,689,082 153,890 173,379 - 265,042 253,001 -	1,851,019 1,071,900 449,538 26,778 49,603 - 129,984 123,216 -	1,295,710 723,620 477,237 19,956 36,430 - 29,531 8,936 -	1,050,650 617,049 373,918 8,072 30,869 - 19,062 1,680 -
1995		36,667,355 15,316,913 9,032,482 5,671,326 1,870,124 - 3,218,960 - 1,557,550	6,017,341 4,339,477 1,425,433 1,800 - - 76,913 - 173,718	30,650,014 10,977,436 7,607,049 5,669,526 1,870,124 - 3,142,047 - 1,383,832	6,768,911 3,609,091 1,818,969 237,451 207,740 - 279,002 - 616,658	2,142,485 1,214,752 448,284 31,860 57,558 - 81,002 - 309,029	1,575,329 814,937 468,308 39,499 46,321 - 49,244 - 157,020	1,367,770 767,113 422,029 58,103 33,130 - 54,307 - 33,088
1996		44,995,294 17,394,727 13,888,685 6,372,664	7,729,809 4,890,596 2,673,839 1,097	37,265,485 12,504,131 11,214,846 6,371,567	7,604,122 4,085,484 2,363,629 261,111	2,375,327 1,423,581 697,408 47,479	1,727,233 925,755 532,977 36,801	1,538,781 852,739 481,271 67,644

2.

() ()

(:)

				-				
		151,157	-	151,157	6,280	1,780	116	4,114
		2,574,420	-	2,574,420	284,919	74,691	68,106	47,331
		-	-	-	-	-	-	-
		3,868,386	153,627	3,714,759	356,833	99,321	57,548	78,112
		745,255	10,650	734,605	245,866	31,067	105,930	7,570
		-	-	-	-	-	-	-
1997		50,764,997	8,296,579	42,468,418	9,367,596	2,476,712	2,190,424	1,612,342
		18,497,728	5,332,575	13,165,153	4,657,933	1,407,263	895,671	953,300
		16,691,729	2,842,178	13,849,551	2,885,313	753,052	572,601	422,034
		6,785,682	2,786	6,782,896	306,279	54,708	42,382	69,265
		228,909	-	228,909	8,300	2,391	253	5,052
		2,876,361	-	2,876,361	357,589	106,093	68,129	53,755
		15,300	-	15,300	15,300	-	-	-
		4,333,185	108,640	4,224,545	462,352	139,170	82,112	88,561
		1,336,103	10,400	1,325,703	674,530	14,035	528,276	20,375
		-	-	-	-	-	-	-
1998		50,989,344	7,446,959		9,034,788	2,321,811	2,203,387	1,647,326
		17,148,290	4,944,434		4,291,083	1,310,666	825,578	867,296
		15,443,117	2,141,808		2,342,543	504,412	609,596	429,663
		7,036,326	2,995		312,605	44,754	38,043	79,678
		294,976	-		19,136	12,470	98	4,977
		2,879,549	-		347,047	91,175	72,641	54,178
		-	-		-	-	-	-
		6,175,440	235,304		880,582	266,431	143,609	202,563
		2,011,646	122,418		841,792	91,903	513,822	8,971
		-	-	-	-	-	-	-
1999		53,772,612	7,960,849		9,991,123	2,745,226	2,251,445	1,829,585
		18,568,517	5,566,120		4,519,890	1,383,722	869,229	888,640
		15,759,319	1,654,440		2,719,835	592,090	772,389	466,765
		6,535,394	80,948		351,888	336,222	48,947	91,969
		383,321	-		60,543	33,622	2,201	2,799
		2,906,139	-		344,553	91,482	63,247	55,537
		-	-		-	-	-	-
		7,891,281	484,729		1,286,799	426,882	253,882	255,117
		1,728,641	174,612		707,615	160,615	241,550	68,758
		-	-	-	-	-	-	-
2000		57,653,225	8,924,257	48,728,968	10,079,045	2,744,160	1,983,198	1,975,390
		20,361,411	6,204,198	14,157,213	4,883,275	1,431,715	931,264	1,015,241
		16,653,692	2,300,015	14,353,677	2,744,198	725,516	591,244	487,673
		8,244,954	9,493	8,235,461	393,547	660,722	50,830	92,332
		204,442	-	204,442	21,987	2,026	154	3,116
		3,713,447	-	3,713,447	399,707	88,449	89,715	68,830
		-	-	-	-	-	-	-
		-	-	-	-	-	-	-
		7,652,942	392,111	7,260,831	1,290,011	370,995	230,747	282,014
		822,337	18,440	803,897	346,320	59,387	89,244	26,184
2001		71,460,746	11,063,993	60,396,753	12,131,417	3,223,402	2,451,756	2,462,432
		26,639,725	7,934,081	18,705,644	6,022,470	1,782,620	1,107,077	1,292,829
		18,337,574	2,655,766	15,681,808	2,788,378	652,694	563,754	564,705
		12,209,985	6,010	12,203,975	822,996	201,974	103,427	169,245
		140,063	-	140,063	20,949	1,053	5,788	2,167
		4,628,105	-	4,628,105	518,988	112,774	98,867	87,562
		-	-	-	-	-	-	-
		-	-	-	-	-	-	-
		8,690,642	465,156	8,225,486	1,440,443	419,481	279,243	270,540
		814,652	2,980	811,672	517,193	52,806	293,600	75,384

2.

() ()

(:)

				1)				
1990		411,537	317,709		9,405,115	2,005,083	1,013,892	686,495
		146,884	166,351		2,783,681	997,724	181,500	150,544
		112,940	89,864		2,193,964	483,937	228,527	140,538
		47,079	22,220		2,649,489	250,459	383,668	242,480
		-	-		-	-	-	-
		-	-		-	-	-	-
		39,291	37,086		1,668,702	245,123	213,168	150,246
		65,343	2,188		109,280	27,839	7,029	2,688
		-	-		-	-	-	-
		-	-		-	-	-	-
1991		477,863	456,937		12,223,132	2,861,142	1,184,584	859,843
		191,700	231,246		3,565,926	1,283,473	215,272	197,812
		178,844	159,856		3,463,850	989,074	377,167	269,462
		47,343	31,525		3,312,600	316,643	418,173	256,091
		18,064	13,445		445,625	45,655	48,077	36,166
		-	-		-	-	-	-
		41,912	20,864		1,435,130	226,296	125,895	100,312
		-	-		-	-	-	-
		-	-		-	-	-	-
		-	-		-	-	-	-
1992		503,189	554,005		13,359,336	3,305,922	1,172,600	875,799
		237,356	273,536		4,263,666	1,572,193	257,006	231,560
		135,582	168,625		3,983,681	1,220,983	356,831	285,173
		49,199	30,068		3,798,034	319,630	445,131	291,892
		-	-		-	-	-	-
		-	-		-	-	-	-
		39,647	17,302		1,050,949	128,607	90,651	59,981
		41,405	64,474		263,006	64,509	22,981	7,193
		-	-		-	-	-	-
		-	-		-	-	-	-
1993		608,119	549,306		14,642,826	3,823,445	1,204,425	917,983
		259,406	351,499		5,075,992	2,060,568	276,471	275,170
		161,101	135,744		3,526,590	1,141,437	282,255	227,974
		68,536	30,224		4,261,072	358,067	510,524	324,630
		-	-		-	-	-	-
		-	-		-	-	-	-
		55,015	20,605		1,475,859	176,266	124,657	79,269
		64,061	11,234		303,313	87,107	10,518	10,940
		-	-		-	-	-	-
		-	-		-	-	-	-
1994		752,958	729,423		19,591,745	5,080,767	1,621,038	1,267,273
		322,050	410,747		6,232,418	2,608,438	341,101	316,781
		216,953	171,436		4,954,600	1,647,912	391,249	299,661
		67,232	31,852		4,667,512	378,655	550,695	395,485
		32,902	23,575		1,522,707	208,646	164,082	111,702
		-	-		-	-	-	-
		63,604	22,861		2,013,421	212,174	154,290	124,184
		50,217	68,952		201,087	24,942	19,621	19,460
		-	-		-	-	-	-
		-	-		-	-	-	-
1995		855,190	828,137		23,881,103	6,260,976	2,019,798	1,635,954
		368,391	443,898		7,368,345	3,152,186	401,597	392,668
		266,958	213,390		5,788,080	2,104,567	454,845	434,935
		82,891	25,098		5,432,075	382,113	657,843	448,143
		39,849	30,882		1,662,384	213,739	188,501	129,984
		-	-		-	-	-	-
		49,678	44,771		2,863,045	244,733	261,909	149,463
		-	-		-	-	-	-
		47,423	70,098		767,174	163,638	55,103	80,761
		-	-		-	-	-	-
1996		1,065,771	897,010		29,661,363	7,928,857	2,682,182	2,010,058
		413,812	469,597		8,418,647	3,561,393	455,980	452,698
		372,946	279,027		8,851,217	3,171,202	662,918	672,573
		81,611	27,576		6,110,456	401,065	767,555	476,619

2.

() ()

(:)

				1)				
		89	181		144,877	9,470	19,768	6,064
		50,056	44,735		2,289,501	292,773	259,072	182,480
		-	-		-	-	-	-
		63,040	58,812		3,357,926	391,131	471,831	183,798
		84,217	17,082		488,739	101,823	45,058	35,826
		-	-		-	-	-	-
1997		1,284,613	906,176	897,329	33,100,822	8,997,322	3,223,624	2,161,588
		476,171	488,283	437,245	8,507,220	3,801,646	500,236	451,421
		504,946	258,827	373,853	10,964,238	3,873,442	1,120,900	706,058
		85,729	35,320	17,875	6,476,617	411,827	831,575	506,651
		94	372	138	220,609	12,328	37,188	18,352
		48,961	52,327	28,324	2,518,772	335,910	280,211	200,592
		-	-	15,300	-	-	-	-
		76,487	51,428	24,594	3,762,193	348,979	403,391	244,694
		92,225	19,619	-	651,173	213,190	50,123	33,820
		-	-	-	-	-	-	-
1998		1,201,343	943,108	717,813	34,507,597	9,067,193	3,261,450	2,376,116
		445,580	443,743	398,220	7,912,773	3,520,308	469,462	415,483
		443,404	198,712	156,756	10,958,766	3,737,096	1,073,717	737,610
		85,559	37,469	27,102	6,720,726	427,352	826,103	520,554
		588	132	871	275,840	9,243	21,230	96,017
		44,772	51,697	32,584	2,532,502	326,974	279,308	196,052
		-	-	-	-	-	-	-
		99,640	110,059	58,280	5,059,554	741,287	480,052	326,272
		81,800	101,296	44,000	1,047,436	304,933	111,578	84,128
		-	-	-	-	-	-	-
1999		1,216,766	1,013,288	934,813	35,820,640	9,804,871	3,350,591	2,306,268
		435,397	507,336	435,566	8,482,507	3,917,932	470,654	452,820
		410,601	223,611	253,656	11,385,044	3,580,613	1,008,758	804,406
		83,991	35,515	35,376	6,102,558	397,335	767,726	489,676
		8,873	11,607	1,441	322,778	42,835	27,759	23,378
		45,286	47,499	41,502	2,561,586	340,103	264,628	181,305
		-	-	-	-	-	-	-
		161,376	111,320	78,222	6,119,753	1,272,388	738,337	327,927
		71,242	76,400	89,050	846,414	253,665	72,729	26,756
		-	-	-	-	-	-	-
2000		1,269,409	1,085,589	1,021,299	38,649,923	10,601,568	3,570,900	2,336,275
		484,269	555,673	465,113	9,273,938	4,331,141	498,120	474,337
		385,191	255,237	299,337	11,609,479	4,074,610	1,134,007	685,995
		100,258	46,290	37,765	7,841,914	532,920	986,292	603,939
		77	15,183	1,431	182,455	7,367	18,952	12,731
		48,568	48,845	55,300	3,313,740	468,044	370,391	245,874
		-	-	-	-	-	-	-
		181,232	128,745	96,278	5,970,820	1,060,854	511,788	311,128
		69,814	35,616	66,075	457,577	126,632	51,350	2,271
2001		1,478,284	1,335,946	1,179,597	48,265,336	12,952,261	4,481,444	2,931,919
		583,547	687,863	568,534	12,683,174	6,431,974	643,919	603,108
		395,182	322,497	289,546	12,893,430	4,086,445	1,056,072	728,694
		152,632	91,798	103,920	11,380,979	789,964	1,430,307	896,425
		32	11,083	826	119,114	4,949	7,149	3,334
		58,427	54,903	106,455	4,109,117	567,976	441,353	312,998
		-	-	-	-	-	-	-
		-	-	-	-	-	-	-
		231,061	161,152	78,966	6,785,043	1,017,995	852,514	386,510
		57,403	6,650	31,350	294,479	52,958	50,130	850

2.

() ()

(:)

1990	825,559	861,587	1,128,026	1,217,414	1,437,854	229,206
	169,577	196,986	197,511	316,979	505,589	67,270
	185,987	175,726	271,818	252,354	408,936	46,141
	275,723	293,859	408,306	426,177	288,925	79,892
	-	-	-	-	-	-
	-	-	-	-	-	-
	179,210	174,898	239,536	209,007	224,721	32,792
	15,062	20,118	10,855	12,896	9,682	3,111
	-	-	-	-	-	-
1991	1,027,897	1,123,451	1,338,692	1,645,384	1,876,802	305,338
	232,676	238,397	240,164	407,807	660,687	89,638
	228,648	299,224	284,095	395,572	548,610	71,999
	363,243	378,919	532,719	551,337	393,285	102,189
	53,805	41,524	65,480	78,291	60,933	15,694
	-	-	-	-	-	-
	149,524	165,388	216,234	212,376	213,286	25,818
	-	-	-	-	-	-
	-	-	-	-	-	-
1992	1,090,081	1,206,062	1,452,259	1,837,007	2,071,923	347,683
	267,187	275,798	286,557	475,797	787,918	109,650
	257,976	326,766	358,364	489,213	593,414	94,961
	422,389	433,473	619,479	660,300	485,783	119,957
	-	-	-	-	-	-
	-	-	-	-	-	-
	130,024	146,794	177,515	129,479	164,825	23,073
	12,505	23,231	10,344	82,218	39,983	42
	-	-	-	-	-	-
1993	1,259,360	1,361,588	1,592,799	1,872,905	2,244,563	365,758
	312,369	317,940	306,830	538,626	867,134	120,884
	288,027	340,164	325,949	333,521	507,640	79,623
	472,171	492,783	702,408	724,966	539,814	135,709
	-	-	-	-	-	-
	-	-	-	-	-	-
	163,348	191,611	251,123	226,969	234,174	28,442
	23,445	19,090	6,489	48,823	95,801	1,100
	-	-	-	-	-	-
1994	1,607,635	1,837,274	2,111,737	2,628,505	2,979,023	458,493
	384,713	360,933	345,683	657,724	1,074,677	142,368
	337,777	466,052	420,229	560,187	744,022	87,511
	484,316	559,420	778,714	799,323	580,199	140,705
	159,398	173,756	219,126	245,176	200,310	40,511
	-	-	-	-	-	-
	206,716	257,542	325,511	344,566	349,112	39,326
	34,715	19,571	22,474	21,529	30,703	8,072
	-	-	-	-	-	-
1995	2,178,068	2,234,070	2,622,490	2,909,008	3,451,884	568,855
	466,587	455,512	411,100	723,592	1,195,509	169,594
	371,044	503,773	492,587	585,969	748,751	91,609
	602,008	643,973	903,425	922,489	707,255	164,826
	160,340	183,265	236,785	267,662	236,938	45,170
	-	-	-	-	-	-
	520,908	386,086	487,159	346,284	394,443	72,060
	-	-	-	-	-	-
	57,181	61,461	91,434	63,012	168,988	25,596
1996	2,658,277	2,701,174	3,267,914	3,558,486	4,161,702	692,713
	553,161	480,275	502,836	845,786	1,387,076	179,442
	770,698	691,283	737,676	849,334	1,156,060	139,473
	682,635	729,023	1,026,466	1,053,248	795,614	178,231

2.

() ()

(:)

		27,192	14,130	20,494	12,464	31,688	3,607
		208,347	264,575	333,980	359,641	330,120	58,513
		-	-	-	-	-	-
		384,040	457,485	577,765	384,537	397,644	109,695
		32,204	64,403	68,697	53,476	63,500	23,752
		-	-	-	-	-	-
1997		2,838,940	3,000,863	3,859,740	3,980,258	4,161,841	876,646
		586,642	517,613	506,554	864,496	1,082,939	195,673
		738,099	862,210	1,069,659	1,023,695	1,356,892	213,280
		724,545	770,540	1,102,086	1,103,858	830,733	194,802
		40,122	22,584	28,342	16,834	40,549	4,310
		234,054	260,531	376,697	401,850	351,407	77,520
		-	-	-	-	-	-
		476,517	520,692	720,787	481,524	421,326	144,283
		38,961	46,693	55,615	87,998	77,995	46,778
		-	-	-	-	-	-
1998		2,995,430	3,075,465	4,071,455	4,507,714	4,223,483	929,291
		550,901	509,453	479,463	804,323	962,431	200,949
		783,860	857,214	1,163,525	1,046,257	1,304,352	255,135
		733,115	821,337	1,149,733	1,160,985	884,242	197,305
		39,751	1,739	40,104	22,561	37,753	7,442
		247,399	271,218	373,391	387,864	369,646	80,650
		-	-	-	-	-	-
		575,114	546,006	791,927	869,295	590,929	138,672
		65,290	68,498	73,312	216,429	74,130	49,138
		-	-	-	-	-	-
1999		3,114,565	2,935,704	4,104,634	4,725,817	4,510,277	967,913
		576,775	509,389	513,022	859,062	971,728	211,125
		927,385	738,818	1,184,933	1,484,487	1,460,003	195,641
		647,306	739,739	1,039,860	1,044,361	808,573	167,982
		39,959	37,932	57,298	39,528	45,055	9,034
		251,430	285,500	365,205	391,136	390,966	91,313
		-	-	-	-	-	-
		601,979	569,145	891,378	772,131	733,897	212,571
		69,731	55,181	52,938	135,112	100,055	80,247
		-	-	-	-	-	-
2000		3,388,552	3,261,095	4,656,397	4,903,539	4,831,593	1,100,004
		633,788	530,669	562,045	948,694	1,060,249	234,895
		907,960	762,187	1,177,253	1,255,820	1,380,128	231,519
		852,503	944,656	1,349,348	1,323,464	1,019,866	228,926
		19,113	-	64,846	25,589	28,403	5,454
		338,750	341,779	461,734	514,248	464,871	108,049
		-	-	-	-	-	-
		588,247	610,282	1,010,803	789,614	847,977	240,127
		48,191	71,522	30,368	46,110	30,099	51,034
		-	-	-	-	-	-
2001		4,278,488	4,223,694	5,891,272	5,985,097	6,084,532	1,436,629
		801,859	658,176	702,574	1,151,559	1,362,461	327,544
		1,075,484	980,724	1,560,027	1,420,204	1,697,242	288,538
		1,214,304	1,314,469	1,903,250	1,905,377	1,568,089	358,794
		9,642	22,573	45,890	11,602	11,753	2,222
		429,982	438,321	603,512	620,145	571,038	123,792
		-	-	-	-	-	-
		-	-	-	-	-	-
		724,915	758,616	1,050,307	848,816	850,181	295,189
		22,302	50,815	25,712	27,394	23,768	40,550

: 1)1997

:

P

A

3.

()

(:)

1990		3,665,176	636,413	3,028,763	1,242,693	381,757	145,638	257,001
		-	-	-	-	-	-	-
		2,195,179	293,541	1,901,638	810,158	264,712	104,787	160,566
		-	-	-	-	-	-	-
		-	-	-	-	-	-	-
		14,478	-	14,478	14,478	-	-	6,336
		1,455,519	342,873	1,112,647	418,057	117,045	40,851	90,100
		-	-	-	-	-	-	-
1991		5,584,111	1,336,550	4,247,562	1,354,296	337,172	191,104	266,985
		-	-	-	-	-	-	-
		5,258,353	1,026,550	4,231,804	1,338,538	337,172	191,104	266,985
		-	-	-	-	-	-	-
		-	-	-	-	-	-	-
		325,758	310,000	15,758	15,758	-	-	-
		-	-	-	-	-	-	-
		-	-	-	-	-	-	-
1992		5,719,240	1,216,242	4,502,998	1,429,646	258,385	231,928	300,343
		-	-	-	-	-	-	-
		3,990,242	636,466	3,353,776	1,189,269	253,983	197,970	231,871
		-	-	-	-	-	-	-
		-	-	-	-	-	-	-
		19,700	-	19,700	19,700	-	-	-
		1,709,298	579,776	1,129,522	220,677	4,402	33,958	68,472
		-	-	-	-	-	-	-
1993		6,917,077	1,542,141	5,374,936	1,981,908	343,387	468,772	532,666
		-	-	-	-	-	-	-
		4,451,400	461,691	3,989,709	1,478,180	293,175	225,014	458,972
		-	-	-	-	-	-	-
		-	-	-	-	-	-	-
		123,640	75,000	48,640	48,640	-	45,000	-
		2,342,037	1,005,450	1,336,587	455,088	50,212	198,758	73,694
		-	-	-	-	-	-	-
1994		6,815,681	528,870	6,286,811	2,145,758	399,617	544,701	605,670
		-	-	-	-	-	-	-
		5,011,907	442,092	4,569,815	1,439,017	333,615	196,245	441,267
		-	-	-	-	-	-	-
		-	-	-	-	-	-	-
		169,928	-	169,928	169,928	-	111,000	58,000
		1,633,846	86,778	1,547,068	537,741	66,002	237,456	106,403
		-	-	-	-	-	-	-
1995		8,487,429	583,758	7,903,671	2,590,949	352,548	883,931	803,554
		-	-	-	-	-	-	-
		6,325,846	490,187	5,835,659	1,847,236	282,799	576,857	619,666
		3,254	-	3,254	3,254	-	3,254	-
		-	-	-	-	-	-	-
		219,923	-	219,923	217,373	-	147,914	68,000
		-	-	-	-	-	-	-
		1,938,406	93,571	1,844,835	523,086	69,749	155,906	115,888
1996		9,018,407	664,107	8,354,300	2,428,600	454,522	361,004	955,927
		-	-	-	-	-	-	-
		6,980,426	519,013	6,461,413	1,809,590	357,135	280,810	677,335
		-	-	-	-	-	-	-

3.

() ()

(:)

		-	-	-	-	-	-	-
		-	-	-	-	-	-	-
		-	-	-	-	-	-	-
		154,398	-	154,398	154,398	25,312	17,461	108,010
		1,883,583	145,094	1,738,489	464,612	72,075	62,733	170,582
		-	-	-	-	-	-	-
1997		9,484,577	671,649	8,812,928	2,797,375	562,276	439,629	1,020,752
		-	-	-	-	-	-	-
		7,585,694	531,618	7,054,076	2,179,949	513,761	289,310	715,389
		-	-	-	-	-	-	-
		-	-	-	-	-	-	-
		-	-	-	-	-	-	-
		184,108	-	184,108	184,108	5,567	51,191	119,400
		1,714,775	140,031	1,574,744	433,318	42,948	99,128	185,963
		-	-	-	-	-	-	-
1998		8,522,595	685,833	-	2,662,948	564,165	458,800	981,372
		-	-	-	-	-	-	-
		7,033,421	577,833	-	2,102,903	526,719	320,040	640,335
		-	-	-	-	-	-	-
		-	-	-	-	-	-	-
		-	-	-	-	-	-	-
		193,146	-	-	193,146	81	59,666	125,436
		1,296,028	108,000	-	366,899	37,365	79,094	215,601
		-	-	-	-	-	-	-
1999		8,745,024	697,968	-	2,688,994	634,503	573,896	827,073
		-	-	-	-	-	-	-
		7,017,570	667,097	-	2,121,844	580,650	429,039	566,349
		-	-	-	-	-	-	-
		-	-	-	-	-	-	-
		-	-	-	-	-	-	-
		-	-	-	-	-	-	-
		175,619	-	-	175,619	5,638	50,000	110,068
		1,551,835	30,871	-	391,531	48,215	94,857	150,656
		-	-	-	-	-	-	-
2000		8,866,793	695,388	8,171,405	2,651,632	742,076	671,901	555,317
		-	-	-	-	-	-	-
		7,703,630	683,388	7,020,242	2,234,414	681,098	524,896	492,672
		-	-	-	-	-	-	-
		-	-	-	-	-	-	-
		-	-	-	-	-	-	-
		-	-	-	-	-	-	-
		167,772	-	167,772	167,771	6,867	63,040	2,100
		995,391	12,000	983,391	249,447	54,111	83,965	60,545
2001		10,092,778	765,854	9,326,924	2,853,561	817,805	652,257	693,310
		-	-	-	-	-	-	-
		8,931,223	713,754	8,217,469	2,590,775	754,420	602,553	623,776
		-	-	-	-	-	-	-
		-	-	-	-	-	-	-
		-	-	-	-	-	-	-
		-	-	-	-	-	-	-
		-	-	-	-	-	-	-
		49,004	-	49,004	49,004	18,324	21,535	2,301
		1,112,551	52,100	1,060,451	213,782	45,061	28,169	67,233

3.

() ()

(:)

				1)				
1990		142,708	315,589		1,786,069	847,461	87,657	90,017
		-	-		-	-	-	-
		85,070	195,024		1,091,480	552,088	47,743	71,619
		-	-		-	-	-	-
		-	-		-	-	-	-
		-	8,142		-	-	-	-
		57,638	112,423		694,590	295,373	39,913	18,398
		-	-		-	-	-	-
1991		337,257	221,778		2,893,265	1,298,163	170,477	111,011
		-	-		-	-	-	-
		322,817	220,460		2,893,265	1,298,163	170,477	111,011
		-	-		-	-	-	-
		-	-		-	-	-	-
		14,440	1,318		-	-	-	-
		-	-		-	-	-	-
		-	-		-	-	-	-
1992		346,857	292,133		3,073,352	1,183,961	220,348	233,300
		-	-		-	-	-	-
		266,829	238,616		2,164,507	860,434	187,720	192,887
		-	-		-	-	-	-
		-	-		-	-	-	-
		19,700	-		-	-	-	-
		60,328	53,517		908,845	323,527	32,628	40,413
		-	-		-	-	-	-
1993		292,806	344,277		3,393,028	1,203,167	233,202	280,999
		-	-		-	-	-	-
		207,888	293,131		2,511,529	962,012	164,041	219,539
		-	-		-	-	-	-
		-	-		-	-	-	-
		3,640	-		-	-	-	-
		81,278	51,146		881,499	241,155	69,161	61,460
		-	-		-	-	-	-
1994		168,698	427,072		4,141,053	1,565,807	212,485	259,247
		-	-		-	-	-	-
		112,881	355,009		3,130,798	1,250,647	173,706	221,536
		-	-		-	-	-	-
		-	-		-	-	-	-
		-	-		928	603	-	-
		55,817	72,063		1,009,327	314,557	38,779	37,711
		-	-		-	-	-	-
1995		233,772	317,144		5,312,722	2,155,401	248,205	361,557
		-	-		-	-	-	-
		177,381	190,533		3,988,423	1,664,034	173,207	277,541
		-	-		-	-	-	-
		-	-		-	-	-	-
		959	500		2,550	-	-	2,550
		-	-		-	-	-	-
		55,432	126,111		1,321,749	491,367	74,998	81,466
1996		287,335	369,812		6,025,700	2,524,485	386,800	393,120
		-	-		-	-	-	-
		200,227	294,083		4,751,823	2,192,680	272,166	331,485
		-	-		-	-	-	-

3.

() ()

(:)

				1)				
		-	-		-	-	-	-
		-	-		-	-	-	-
		-	-		-	-	-	-
		1,992	1,623		-	-	-	-
		85,116	74,106		1,273,877	331,805	114,634	61,635
		-	-		-	-	-	-
1997		264,814	309,816	200,088	6,015,553	2,869,398	354,332	369,700
		-	-	-	-	-	-	-
		230,762	245,837	184,890	4,874,127	2,424,916	281,946	309,177
		-	-	-	-	-	-	-
		-	-	-	-	-	-	-
		3,078	4,872	-	-	-	-	-
		30,974	59,107	15,198	1,141,426	444,482	72,386	60,523
		-	-	-	-	-	-	-
1998		248,343	214,944	195,944	5,173,814	2,452,452	352,048	336,893
		-	-	-	-	-	-	-
		229,455	196,126	190,228	4,352,685	2,033,409	297,780	321,462
		-	-	-	-	-	-	-
		-	-	-	-	-	-	-
		3,176	4,787	-	-	-	-	-
		15,712	14,031	5,096	821,129	419,043	54,268	15,431
		-	-	-	-	-	-	-
1999		214,691	220,063	218,768	5,358,062	2,459,415	312,928	366,583
		-	-	-	-	-	-	-
		196,838	182,969	165,999	4,228,629	1,996,609	235,432	361,547
		-	-	-	-	-	-	-
		-	-	-	-	-	-	-
		-	-	-	-	-	-	-
		3,258	6,655	-	-	-	-	-
		14,595	30,439	52,769	1,129,433	462,806	77,496	5,036
		-	-	-	-	-	-	-
2000		186,949	241,688	253,701	5,519,773	2,493,506	335,320	383,100
		-	-	-	-	-	-	-
		172,121	198,901	164,726	4,785,828	2,120,455	309,875	377,960
		-	-	-	-	-	-	-
		-	-	-	-	-	-	-
		-	-	-	-	-	-	-
		29	6,760	88,975	1	-	-	-
		14,799	36,027	-	733,944	373,051	25,445	5,140
2001		221,626	210,991	257,572	6,473,363	2,993,830	348,840	393,874
		-	-	-	-	-	-	-
		204,754	190,323	214,949	5,626,694	2,613,651	276,098	342,707
		-	-	-	-	-	-	-
		-	-	-	-	-	-	-
		-	-	-	-	-	-	-
		-	-	-	-	-	-	-
		2,376	4,468	-	-	-	-	-
		14,496	16,200	42,623	846,669	380,179	72,742	51,167

3.

() ()

(:)

1990		80,997	113,547	207,939	92,237	257,503	8,711
		-	-	-	-	-	-
		50,634	52,962	86,432	53,269	168,371	8,361
		-	-	-	-	-	-
		-	-	-	-	-	-
		-	-	-	-	-	-
		30,363	60,586	121,508	38,968	89,131	350
		-	-	-	-	-	-
1991		187,584	272,271	306,184	121,148	387,953	38,475
		-	-	-	-	-	-
		187,584	272,271	306,184	121,148	387,953	38,475
		-	-	-	-	-	-
		-	-	-	-	-	-
		-	-	-	-	-	-
		-	-	-	-	-	-
		-	-	-	-	-	-
1992		183,000	278,684	279,784	178,610	434,076	81,589
		-	-	-	-	-	-
		134,648	170,128	200,383	96,439	276,918	44,950
		-	-	-	-	-	-
		-	-	-	-	-	-
		-	-	-	-	-	-
		48,352	108,556	79,401	82,171	157,158	36,639
		-	-	-	-	-	-
1993		273,944	279,696	266,255	263,464	491,333	100,968
		-	-	-	-	-	-
		171,331	212,151	202,521	180,909	322,925	76,100
		-	-	-	-	-	-
		-	-	-	-	-	-
		-	-	-	-	-	-
		102,613	67,545	63,734	82,555	168,408	24,868
		-	-	-	-	-	-
1994		310,560	356,665	301,799	300,407	714,463	119,620
		-	-	-	-	-	-
		182,569	286,731	250,367	209,831	450,445	104,966
		-	-	-	-	-	-
		-	-	-	-	-	-
		-	-	-	-	325	-
		127,991	69,934	51,432	90,576	263,693	14,654
		-	-	-	-	-	-
1995		395,280	407,723	386,302	350,535	912,623	95,096
		-	-	-	-	-	-
		284,362	305,380	286,489	235,363	688,482	73,565
		-	-	-	-	-	-
		-	-	-	-	-	-
		-	-	-	-	-	-
		-	-	-	-	-	-
		110,918	102,343	99,813	115,172	224,141	21,531
1996		324,736	446,482	417,276	343,895	1,080,555	108,351
		-	-	-	-	-	-
		243,289	325,441	331,720	231,744	754,161	69,137
		-	-	-	-	-	-

3.

() ()

(:)

		-	-	-	-	-	-
		-	-	-	-	-	-
		-	-	-	-	-	-
		-	-	-	-	-	-
		81,447	121,041	85,556	112,151	326,394	39,214
		-	-	-	-	-	-
1997		368,455	467,151	441,191	285,766	754,959	104,601
		-	-	-	-	-	-
		245,812	378,416	361,333	195,530	605,669	71,328
		-	-	-	-	-	-
		-	-	-	-	-	-
		-	-	-	-	-	-
		122,643	88,735	79,858	90,236	149,290	33,273
		-	-	-	-	-	-
1998		256,184	310,798	393,338	275,444	701,671	94,986
		-	-	-	-	-	-
		211,225	260,556	332,160	190,599	636,264	69,230
		-	-	-	-	-	-
		-	-	-	-	-	-
		-	-	-	-	-	-
		44,959	50,242	61,178	84,845	65,407	25,756
		-	-	-	-	-	-
1999		270,524	300,886	437,050	316,299	590,615	60,868
		-	-	-	-	-	-
		149,771	243,481	375,113	215,193	-	-
		-	-	-	-	-	-
		-	-	-	-	-	-
		-	-	-	-	-	-
		-	-	-	-	-	-
		120,753	57,405	61,937	101,106	219,719	23,175
		-	-	-	-	-	-
2000		273,247	366,816	403,861	397,007	775,548	91,368
		-	-	-	-	-	-
		141,027	293,294	339,847	378,154	757,353	67,863
		-	-	-	-	-	-
		-	-	-	-	-	-
		-	-	-	-	-	-
		-	-	-	-	-	-
		-	-	-	-	-	-
		132,220	73,522	64,013	18,853	18,195	23,505
2001		372,572	433,590	421,611	499,709	914,963	94,374
		-	-	-	-	-	-
		283,545	364,530	330,563	466,511	881,506	67,583
		-	-	-	-	-	-
		-	-	-	-	-	-
		-	-	-	-	-	-
		-	-	-	-	-	-
		-	-	-	-	-	-
		89,027	69,060	91,048	33,198	33,457	26,791

: 1)1997

:

,

4

4.

()

(:)

1990		3,757,841	1,237,436	2,520,405	415,396	90,913	152,043	66,039
		-	-	-	-	-	-	-
		3,149,172	943,195	2,205,977	396,057	84,813	152,043	60,491
		-	-	-	-	-	-	-
		-	-	-	-	-	-	-
		134,299	133,025	1,273	1,273	-	-	1,273
		474,371	161,216	313,155	18,065	6,100	-	4,275
		-	-	-	-	-	-	-
1991		4,254,313	1,027,769	3,226,543	549,499	226,450	77,280	116,130
		3,961,599	875,439	3,086,161	503,610	216,305	70,552	109,863
		-	-	-	-	-	-	-
		-	-	-	-	-	-	-
		-	-	-	-	-	-	-
		292,713	152,331	140,383	45,889	10,145	6,728	6,267
		-	-	-	-	-	-	-
		-	-	-	-	-	-	-
1992		6,894,043	1,755,349	5,138,694	1,213,433	735,152	105,206	207,614
		-	-	-	-	-	-	-
		4,880,252	1,560,202	3,320,050	1,014,265	707,907	60,096	177,334
		-	-	-	-	-	-	-
		1,177,188	-	1,177,188	87,315	-	35,341	26,307
		-	-	-	-	-	-	-
		394,781	167,785	226,996	74,714	10,445	6,969	3,973
		441,822	27,362	414,460	37,139	16,800	2,800	-
		-	-	-	-	-	-	-
1993		7,177,159	1,543,842	5,633,317	1,322,796	610,529	241,202	216,908
		-	-	-	-	-	-	-
		5,119,629	1,410,541	3,709,088	1,007,081	550,132	193,790	183,044
		-	-	-	-	-	-	-
		1,360,825	-	1,360,825	129,364	-	39,083	28,731
		-	-	-	-	-	-	-
		301,966	93,333	208,633	38,504	13,431	7,979	5,133
		394,739	39,968	354,771	147,847	46,966	350	-
		-	-	-	-	-	-	-
1994		7,321,723	3,212,038	4,109,685	1,194,487	479,593	413,813	189,952
		-	-	-	-	-	-	-
		5,180,606	1,644,423	3,536,183	1,039,385	403,596	381,784	168,847
		-	-	-	-	-	-	-
		-	-	-	-	-	-	-
		624,733	337,310	287,423	81,310	46,295	15,029	7,145
		1,516,384	1,230,305	286,079	73,792	29,702	17,000	13,960
		-	-	-	-	-	-	-
1995		7,224,126	2,731,099	4,493,027	1,575,342	837,632	182,109	167,545
		-	-	-	-	-	-	-
		5,388,159	1,713,512	3,674,647	1,118,407	502,046	150,568	157,805
		-	-	-	-	-	-	-
		-	-	-	-	-	-	-
		670,338	346,272	324,066	122,287	79,087	14,792	9,740
		-	-	-	-	-	-	-
		1,165,629	671,315	494,314	334,648	256,499	16,749	-
1996		9,071,825	2,860,629	6,211,196	2,923,264	1,312,818	846,935	223,212
		1,735	1,735	-	-	-	-	-
		6,741,934	1,729,045	5,012,889	2,108,396	981,322	511,187	174,209
		-	-	-	-	-	-	-

4.

() ()

(:)

		-	-	-	-	-	-	-
		-	-	-	-	-	-	-
		-	-	-	-	-	-	-
		907,233	340,001	567,232	323,902	109,550	173,518	12,213
		1,420,923	789,848	631,075	490,966	221,946	162,230	36,790
1997		9,322,054	2,570,605	6,751,449	3,111,612	1,366,472	779,691	214,304
		-	-	-	-	-	-	-
		6,885,812	1,698,769	5,187,043	2,142,517	824,952	593,744	192,432
		-	-	-	-	-	-	-
		805	-	805	-	-	-	-
		-	-	-	-	-	-	-
		1,028,274	285,344	742,930	445,691	210,084	72,513	21,872
		1,107,163	586,492	820,671	523,404	331,436	113,434	-
1998		9,608,769	2,480,028	-	3,453,376	1,587,828	759,682	233,767
		-	-	-	-	-	-	-
		6,890,822	1,681,902	-	2,026,244	775,032	481,852	206,111
		3,200	150	-	250	-	250	-
		-	-	-	-	-	-	-
		5,976	-	-	-	-	-	-
		-	-	-	-	-	-	-
		1,397,866	319,603	-	662,026	280,930	123,374	21,987
		1,310,845	478,373	-	764,856	531,866	154,206	5,669
1999		10,608,099	2,922,314	-	3,905,489	1,891,276	682,411	226,215
		47	-	-	13	-	-	13
		6,974,197	1,697,427	-	2,183,614	1,047,820	289,097	191,991
		-	-	-	-	-	-	-
		-	-	-	-	-	-	-
		-	-	-	-	-	-	-
		-	-	-	-	-	-	-
		1,620,634	412,761	-	626,460	211,456	126,289	33,169
		2,013,221	812,126	-	1,095,402	632,000	267,025	1,042
2000		10,656,130	2,998,963	7,657,167	3,552,972	1,071,903	873,998	461,338
		189	-	189	69	69	-	-
		7,174,130	1,818,184	5,355,946	2,106,486	813,753	254,570	323,219
		-	-	-	-	-	-	-
		-	-	-	-	-	-	-
		-	-	-	-	-	-	-
		-	-	-	-	-	-	-
		2,071,988	404,828	1,667,160	895,996	189,081	299,983	115,655
		1,409,823	775,951	633,872	550,421	69,000	319,445	22,464
2001		12,442,095	2,789,181	9,652,914	4,289,379	1,476,785	880,994	587,458
		199	-	199	-	-	-	-
		8,714,477	1,878,380	6,836,097	2,661,630	1,019,768	294,952	417,947
		-	-	-	-	-	-	-
		-	-	-	-	-	-	-
		-	-	-	-	-	-	-
		-	-	-	-	-	-	-
		2,438,322	234,964	2,203,358	1,061,015	243,432	372,508	121,247
		1,289,097	675,837	613,260	566,734	213,585	213,534	48,264

4.

() ()

(:)

				1)				
1990		70,009	36,391		2,105,009	411,242	113,920	95,119
		-	-		-	-	-	-
		62,319	36,391		1,809,919	366,069	82,523	83,031
		-	-		-	-	-	-
		-	-		-	-	-	-
		-	-		-	-	-	-
		7,690	-		295,090	45,173	31,398	12,089
		-	-		-	-	-	-
1991		60,423	69,216		2,677,044	451,597	146,375	131,877
		56,379	50,511		2,582,551	449,544	144,142	124,177
		-	-		-	-	-	-
		-	-		-	-	-	-
		-	-		-	-	-	-
		4,044	18,705		94,494	2,053	2,233	7,700
		-	-		-	-	-	-
		-	-		-	-	-	-
1992		74,795	90,666		3,925,261	856,323	242,652	229,108
		-	-		-	-	-	-
		33,030	35,898		2,305,785	535,124	109,106	129,517
		-	-		-	-	-	-
		-	25,667		1,089,873	189,239	103,072	82,755
		-	-		-	-	-	-
		33,693	19,634		152,282	15,487	12,338	9,095
		8,072	9,467		377,321	116,473	18,136	7,741
		-	-		-	-	-	-
1993		167,828	86,329		4,310,521	891,832	322,030	222,303
		-	-		-	-	-	-
		42,434	37,681		2,702,007	671,585	159,112	107,946
		-	-		-	-	-	-
		34,557	26,993		1,231,461	191,504	133,360	99,749
		-	-		-	-	-	-
		5,201	6,760		170,129	22,893	14,822	9,379
		85,636	14,895		206,924	5,850	14,736	5,229
		-	-		-	-	-	-
1994		77,668	33,461		2,915,198	711,600	138,135	82,013
		-	-		-	-	-	-
		58,375	26,783		2,496,798	659,661	119,652	68,362
		-	-		-	-	-	-
		-	-		-	-	-	-
		6,163	6,678		206,113	32,523	12,483	12,363
		13,130	-		212,287	19,416	6,000	1,288
		-	-		-	-	-	-
1995		272,842	115,214		2,917,685	676,447	180,219	92,243
		-	-		-	-	-	-
		211,569	96,419		2,556,240	623,600	134,622	71,434
		-	-		-	-	-	-
		-	-		-	-	-	-
		9,573	9,095		201,779	32,614	14,278	13,682
		-	-		-	-	-	-
		51,700	9,700		159,666	20,233	31,319	7,127
1996		406,845	133,454		3,287,932	735,886	200,145	113,963
		-	-		-	-	-	-
		317,973	123,705		2,904,493	689,774	162,269	90,179
		-	-		-	-	-	-

4.

() ()

(:)

				1)				
		-	-		-	-	-	-
		-	-		-	-	-	-
		-	-		-	-	-	-
		18,872	9,749		243,330	37,773	19,580	16,341
		70,000	-		140,109	8,339	18,296	7,443
1997		430,907	187,288	132,950	3,639,837	867,491	227,206	152,159
		-	-	-	-	-	-	-
		309,918	93,297	128,174	3,044,526	805,259	179,272	122,923
		-	-	-	-	-	-	-
		-	-	-	-	-	-	-
		-	-	-	805	-	-	-
		-	-	-	-	-	-	-
		66,955	69,491	4,776	297,239	55,904	23,742	20,009
		54,034	24,500	-	297,267	6,328	24,192	9,227
1998		518,656	271,293	82,150	3,675,365	977,707	218,780	161,784
		-	-	-	-	-	-	-
		354,791	142,782	65,676	3,182,736	882,934	183,577	134,223
		-	-	-	2,800	200	-	-
		-	-	-	-	-	-	-
		-	-	-	5,976	4,140	-	-
		-	-	-	-	-	-	-
		130,875	97,739	7,121	416,237	86,710	32,883	25,169
		32,990	30,772	9,353	67,616	3,723	2,320	2,392
1999		563,731	429,573	112,283	3,780,296	945,252	224,736	161,882
		-	-	-	34	-	29	5
		307,084	284,996	62,626	3,093,156	828,780	162,920	128,247
		-	-	-	-	-	-	-
		-	-	-	-	-	-	-
		-	-	-	-	-	-	-
		-	-	-	-	-	-	-
		140,047	105,722	9,777	581,413	100,500	42,365	33,630
		116,600	38,855	39,880	105,693	15,972	19,422	-
2000		564,923	498,043	82,767	4,104,195	1,163,113	246,502	183,339
		-	-	-	120	-	-	-
		355,390	309,076	50,478	3,249,460	908,854	194,477	136,842
		-	-	-	-	-	-	-
		-	-	-	-	-	-	-
		-	-	-	-	-	-	-
		-	-	-	-	-	-	-
		145,692	133,296	12,289	771,164	229,467	49,482	46,497
		63,841	55,671	20,000	83,451	24,792	2,543	-
2001		700,509	535,955	107,678	5,363,535	1,713,518	294,962	247,088
		-	-	-	199	-	-	-
		483,076	360,567	85,320	4,174,467	1,301,530	220,283	180,067
		-	-	-	-	-	-	-
		-	-	-	-	-	-	-
		-	-	-	-	-	-	-
		-	-	-	-	-	-	-
		-	-	-	-	-	-	-
		166,433	135,037	22,358	1,142,343	387,358	73,130	66,886
		51,000	40,351	-	46,526	24,630	1,549	135

4.

() ()

(:)

1990		183,971	148,027	179,426	215,362	727,042	30,898
		-	-	-	-	-	-
		181,246	124,380	157,087	197,590	599,194	18,800
		-	-	-	-	-	-
		-	-	-	-	-	-
		-	-	-	-	-	-
		2,725	23,648	22,340	17,772	127,847	12,099
		-	-	-	-	-	-
1991		237,392	253,736	365,449	357,032	701,116	32,471
		220,593	233,951	340,383	357,032	681,939	30,790
		-	-	-	-	-	-
		-	-	-	-	-	-
		-	-	-	-	-	-
		-	-	-	-	-	-
		16,798	19,784	25,066	-	19,177	1,681
		-	-	-	-	-	-
		-	-	-	-	-	-
1992		442,171	364,769	383,111	541,413	787,376	78,338
		-	-	-	-	-	-
		293,658	175,214	201,227	309,236	514,165	38,538
		-	-	-	-	-	-
		106,280	118,429	136,166	164,767	154,855	34,310
		-	-	-	-	-	-
		19,132	22,908	27,529	20,714	23,175	1,904
		23,101	48,218	18,189	46,696	95,181	3,586
		-	-	-	-	-	-
1993		481,772	417,524	396,267	565,063	922,486	91,244
		-	-	-	-	-	-
		316,413	233,631	229,749	338,923	599,054	45,594
		-	-	-	-	-	-
		132,508	126,572	130,535	192,823	188,413	35,997
		-	-	-	-	-	-
		19,471	24,591	29,158	25,663	21,633	2,519
		13,380	32,730	6,825	7,654	113,386	7,134
		-	-	-	-	-	-
1994		295,837	318,613	261,175	376,348	678,742	52,735
		-	-	-	-	-	-
		256,262	275,363	221,353	309,389	538,488	48,268
		-	-	-	-	-	-
		-	-	-	-	-	-
		22,539	23,796	28,274	30,961	39,670	3,504
		17,036	19,454	11,548	35,998	100,584	963
		-	-	-	-	-	-
1995		305,899	361,600	339,319	336,383	570,194	55,381
		-	-	-	-	-	-
		271,980	298,484	292,105	285,778	527,457	50,780
		-	-	-	-	-	-
		-	-	-	-	-	-
		21,443	26,365	30,181	30,485	30,046	2,685
		-	-	-	-	-	-
		12,476	36,751	17,033	20,120	12,691	1,916
1996		377,789	479,804	416,768	355,451	547,427	60,699
		-	-	-	-	-	-
		341,939	430,783	349,251	294,673	495,380	50,245
		-	-	-	-	-	-

4.

() ()

(:)

		-	-	-	-	-	-
		-	-	-	-	-	-
		-	-	-	-	-	-
		26,821	23,710	40,777	37,786	36,826	3,716
		9,029	25,311	26,740	22,992	15,221	6,738
1997		347,147	438,870	483,336	394,250	506,634	222,744
		-	-	-	-	-	-
		302,640	402,872	404,157	321,347	451,028	55,028
		-	-	-	-	-	-
		-	-	-	-	-	-
		-	-	-	-	805	-
		-	-	-	-	-	-
		30,762	24,863	43,885	46,999	45,095	5,980
		13,745	11,135	35,294	25,904	9,706	161,736
1998		346,701	483,327	506,211	367,275	477,972	135,608
		-	-	-	-	-	-
		294,278	438,052	431,445	280,308	410,604	127,315
		1,500	-	-	-	1,100	-
		-	-	-	-	-	-
		-	-	-	-	1,836	-
		-	-	-	-	-	-
		39,417	39,315	69,271	60,774	55,568	7,130
		11,506	5,960	5,495	26,193	8,864	1,163
1999		381,241	441,021	578,118	409,701	525,153	113,192
		-	-	-	-	-	-
		316,462	377,656	436,075	315,535	426,023	101,458
		-	-	-	-	-	-
		-	-	-	-	-	-
		-	-	-	-	-	-
		55,102	56,071	128,747	80,406	75,328	9,264
		9,677	7,294	13,296	13,760	23,802	2,470
2000		442,901	334,749	586,546	456,487	596,710	93,848
		120	-	-	-	-	-
		355,413	255,246	464,315	346,640	509,750	77,923
		-	-	-	-	-	-
		65,128	72,709	113,328	97,127	85,096	12,330
		22,240	6,794	8,903	12,720	1,864	3,595
2001		479,435	368,945	695,290	594,298	878,884	91,115
		-	-	199	-	-	-
		392,651	252,181	558,960	448,185	754,505	66,105
		-	-	-	-	-	-
		-	-	-	-	-	-
		-	-	-	-	-	-
		-	-	-	-	-	-
		85,162	115,386	134,070	137,818	120,223	22,310
		1,622	1,378	2,061	8,295	4,156	2,700

: 1)1997

:

,

a



	가	.
20	.	,
가	가	.
가	가	(RDA) 가
가	.	.
	10	가
	(DATAR)	.
.	가	20
.	가	.
	가	가
	가	

가	가	1	.
			,
			가
			가
		10	2
			.
			(前者)
가		(OECD)	,
가			24
가	2003 7 1	가	.
가	/		,
			,
			,
' 1	2	' economize)가	(the will to
			가.
	가		가
			,
			가
	가		가
			가
			가
2			가
			.
1995 1			,
7	2		가
			.
			가
1997 IMF		가	,
7000			,

<p>가 가</p>	<p>가</p>	<p>가</p>
<p>가 가</p>	<p>가</p>	<p>IMF 5 98 10 4 7 가 , 3 가</p>
<p>가</p>	<p>가 (脫)</p>	<p>가</p>
<p>가</p>	<p>가</p>	<p>가</p>
<p>가</p>	<p>60 70 가 가 . 2003 7 8 /</p>	<p>가 가 27 2~3 가</p>

가

가

가

가 - 가

가

가

가

가

가

가

가

가 가

3%

가

가 가

IMF

가

가

2

2003 7 85

/
/ ()
/ ()
/ ()
()
()
()
/ ()
()
/ ()
()
/

/ 2003 7 15 / 8 7 (85)
1996 5 31 / 7859 /
/ / 가 79-6
TEL : 2186 2130 2 E-mail: pub@kipf.re.kr
Homepage: http://www.kipf.re.kr

3,000
• ₩ 1
• ₩ 1
•

『 』

1 30,000 2 3
가

• FAX • E-mail

(6923437)
: ()
: 441-05-00011

TEL : (02)2186-2131 FAX : (02)2186-2139
E-mail : pub@kipf.re.kr
: 138-774 가 79-6

